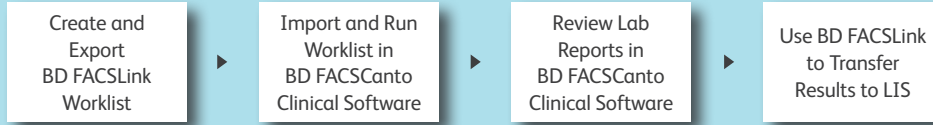


Quick Reference Guide for Using BD Panels with BD FACSCanto™ Clinical Software and the BD FACSLink™ LIS Interface

This guide contains instructions for using BD panels created in BD FACSCanto™ Clinical software* (v2.2 and later) with the BD FACSLink™ laboratory information system (LIS) interface.

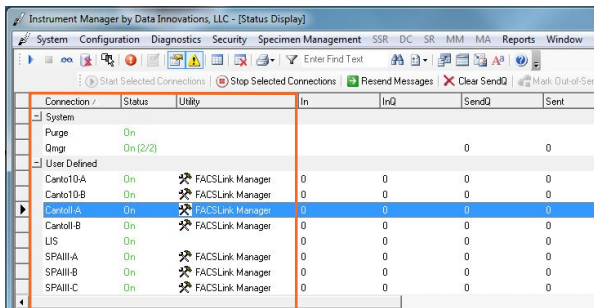
Workflow Overview



Creating and Exporting a Worklist in BD FACSLink (Instrument Manager) Software

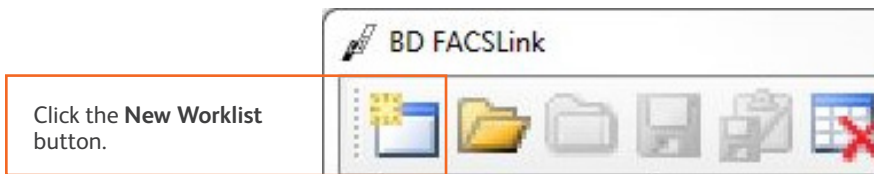
- 1 Start Instrument Manager software and log in.
- 2 Open BD FACSLink by clicking **FACSLink Manager** under the **Utility** tab for the appropriate connection.

Enter your connection here _____

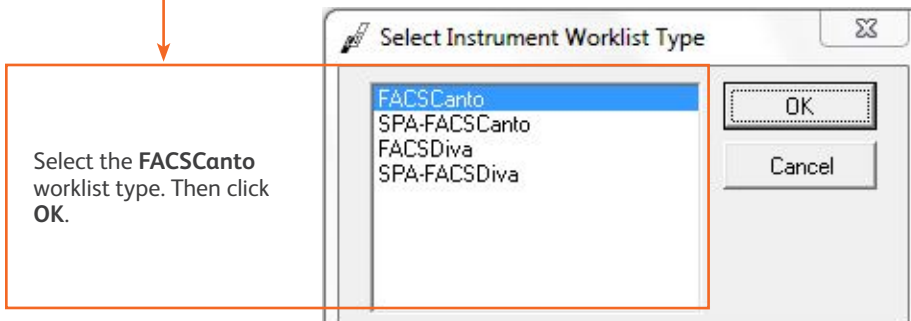


Select the **CantoII** connection you want.

- 3 Create a new worklist.



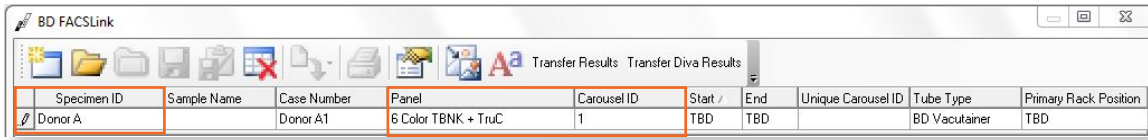
Click the **New Worklist** button.



Select the **FACSCanto** worklist type. Then click **OK**.

* BD FACSCanto and BD FACSCanto II flow cytometers are for In Vitro Diagnostic Use.

- 4 Enter or scan in the **Specimen ID**, then press **Tab**. Select the **Panel**, if needed, and enter the **Carousel ID**, then press **Enter**.



Specimen ID	Sample Name	Case Number	Panel	Carousel ID	Start	End	Unique Carousel ID	Tube Type	Primary Rack Position
Donor A		Donor A1	6 Color TBNK + TruC	1	TBD	TBD		BD Vacutainer	TBD

- 5 Export and save the worklist.

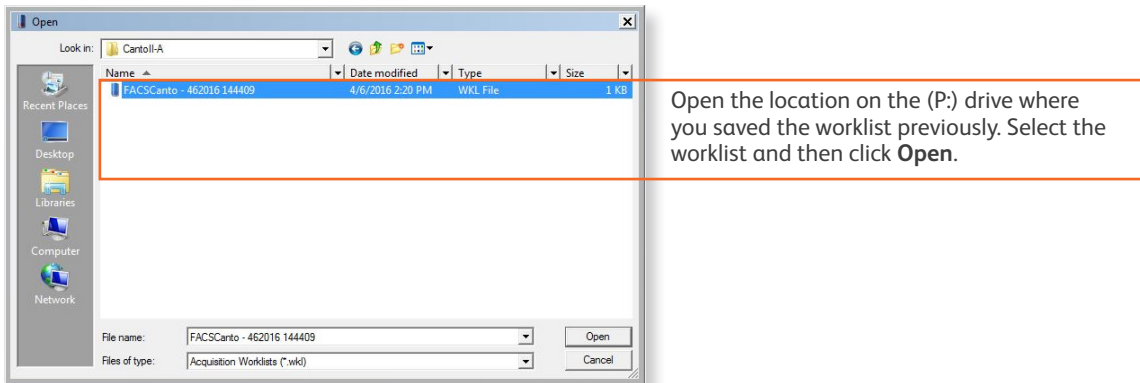


Enter your location here _____

- 6 Exit BD FACSLink software.

Importing and Running a BD FACSLink Worklist in BD FACSCanto Clinical Software

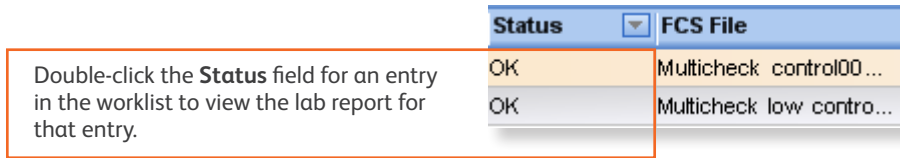
- 1 Start BD FACSCanto Clinical software and log in.
- 2 Select **File > Open Worklist**.



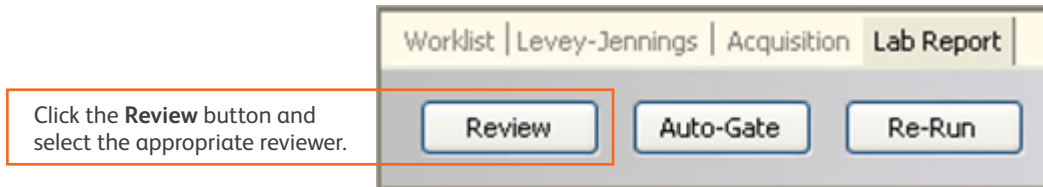
- 3 Verify that the information in the worklist is correct.
- 4 Run the worklist.

Reviewing Lab Reports in BD FACSCanto Clinical Software

- 1 View the lab report for each entry in the worklist.



- 2 Inspect the plots, gates, and QC messages on the lab report.
- 3 If needed, manually adjust the gates.
- 4 When all reports have been reviewed, append a virtual signature to the reviewed reports.



Transferring Results to the LIS

- 1 Start Instrument Manager software and log in.
- 2 Open BD FACSLink by clicking **FACSLink Manager** under the **Utility** tab for the appropriate connection.

Enter your connection here _____

- 3 Display the **BD FACSLink** window and transfer the results.



- 4 Exit the software.

This material is for training purposes.

BD FACSCanto™ Clinical software, BD FACSCanto and BD FACSCanto II are CE marked For In Vitro Diagnostic Use.
23-15336-01

BD Biosciences, 2350 Qume Drive, San Jose, CA 95131, USA

bdbiosciences.com

BD, the BD Logo, FACSCanto, and FACSLink are trademarks of Becton, Dickinson and Company or its affiliates.
©2020 BD. All rights reserved.

