



BD Accuri™

Guide to the FCS Express™
BD Accuri™ Software Importer
Instruction Manual



*For Research Use Only. Not for use in diagnostic or therapeutic procedures.
BD flow cytometers are Class 1 Laser Products.*

FCS Express is a trademark of De Novo Software Inc.

BD, BD Logo and all other trademarks are property of Becton, Dickinson and Company. © 2013 BD

FCS Express™ is a flow cytometry software package that allows advanced data analysis and presentation including color dot plots, unlimited overlays, heat maps, extended statistics, custom reporting, and batch processing.

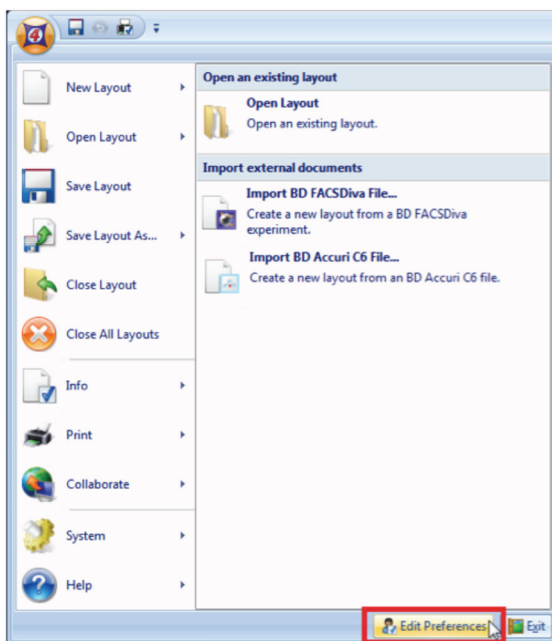
The FCS Express BD Accuri Software Importer, available in FCS Express version 4, allows you to automatically recreate any analysis scheme from BD Accuri™ software in FCS Express. After you have collected data on the BD Accuri™ C6 flow cytometer, you can easily convert the BD Accuri software workspace to an FCS Express layout by following these directions.

We recommend that you update to the most recent version of FCS Express to ensure the best compatibility. Visit denovosoftware.com for more information.

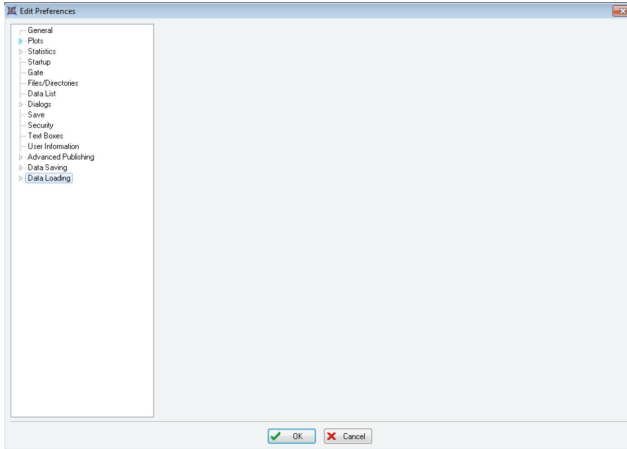
Setting Preferences

First set preferences in FCS Express for optimal performance.

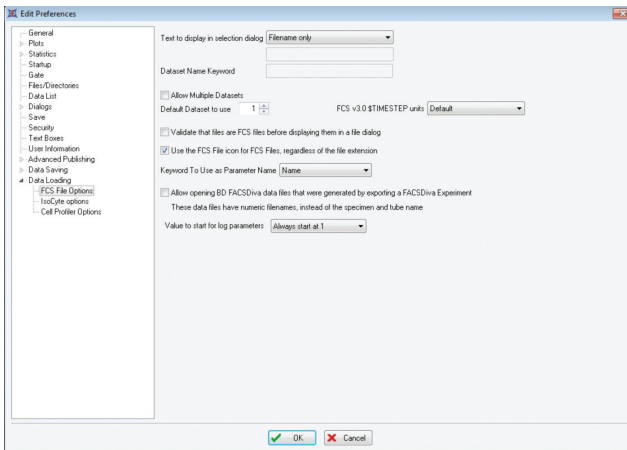
1. Open FCS Express.
2. Select **Edit Preferences** from the **Applications Button** menu.



- Expand the **Data Loading** category in the **Edit Preferences** window by clicking the + or arrow next to **Data Loading**.



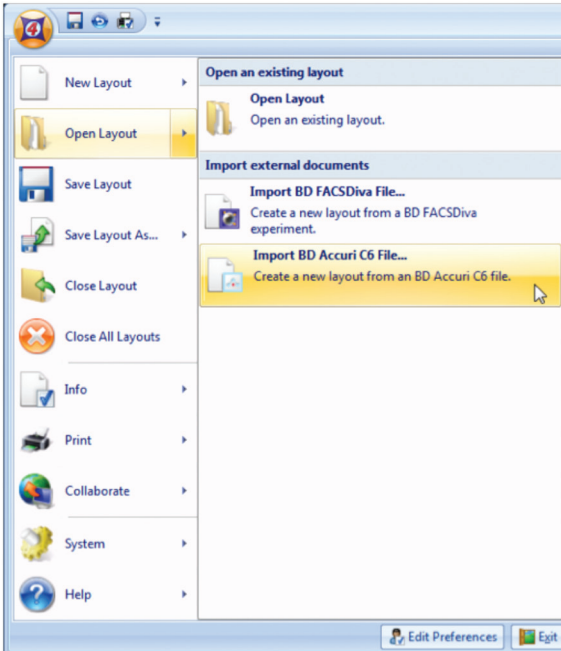
- Select **FCS File Options** under **Data Loading** to update the window.



- Clear the **Allow Multiple Datasets** checkbox.
- Clear the **Validate that files are FCS Files before displaying them in a file dialog** checkbox.
- Click **OK** to save the new preferences. You are now ready to begin using FCS Express to view data collected with BD Accuri software.

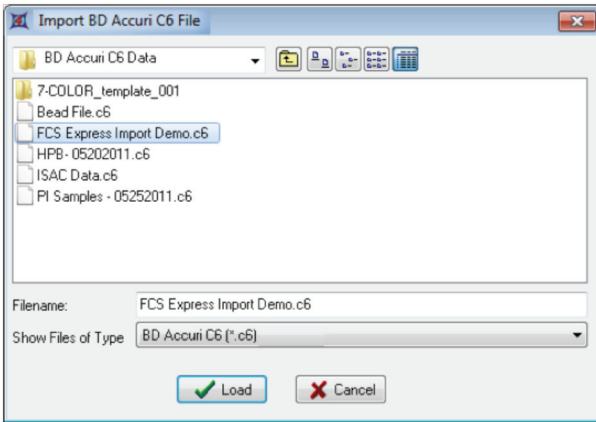
Importing a BD Accuri Software Layout into FCS Express

1. Open FCS Express.
2. From the **Applications Button** menu, select **Open Layout > Import Accuri C6 File**.



3. Select the BD Accuri software file (.c6) that contains the data you want to view with FCS Express. (In this example, the file is FCS Express Import Demo.c6.)

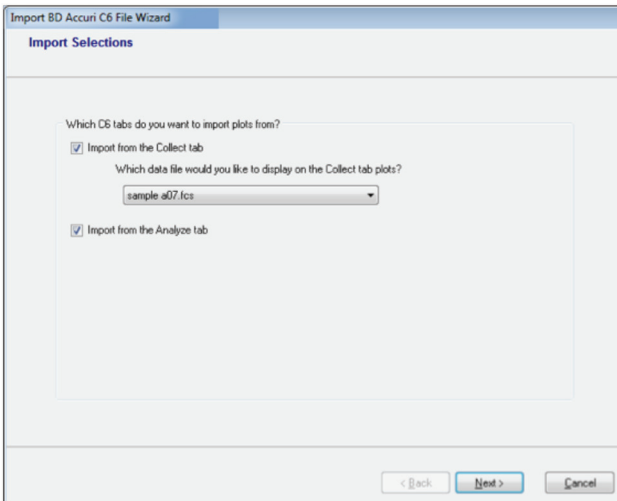
NOTE: The BD Accuri Software Importer reads the FCS data directly from the BD Accuri software file, so you do not have to export individual files.



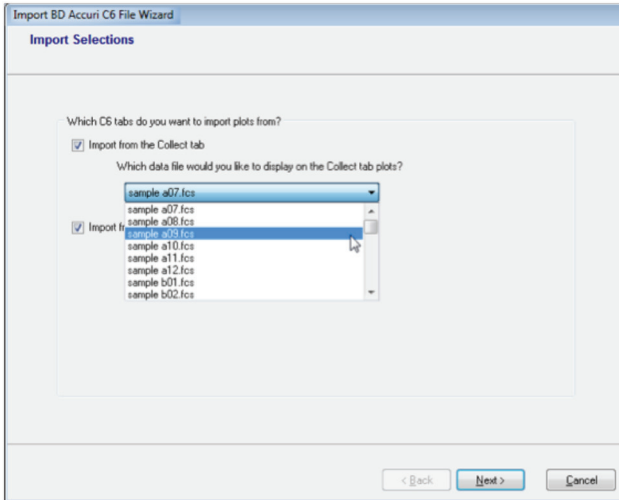
4. Click **Load**.

FCS Express prompts you for a location from where to import plots: the **Collect** or **Analyze** tab. It also displays a list of all the Sample Wells (FCS files) contained within the BD Accuri software file.

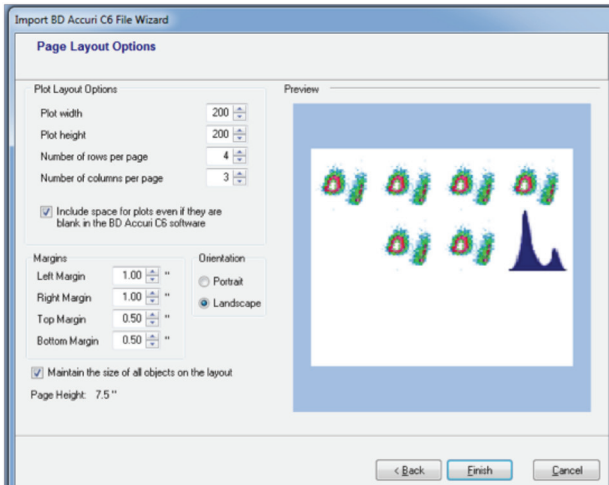
5. Select whether you want to recreate the plots from either the **Collect** or **Analyze** tab in BD Accuri software.



NOTE: If you choose to import plots from the Collect tab, you can select which data well you want to display in the FCS Express layout.



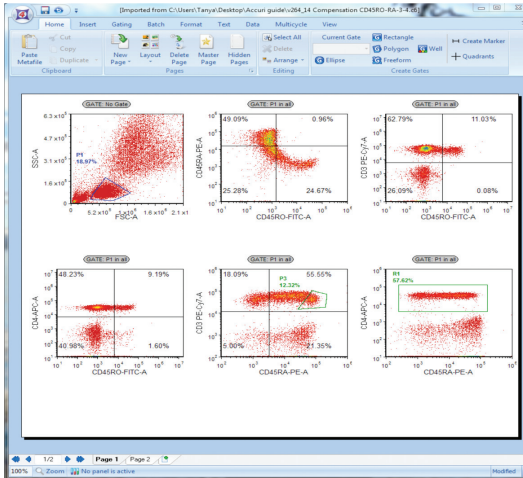
6. Click Next.
7. Select how you want the FCS Express layout to look. (The example has plots as they were displayed in BD Accuri software: four plots across in a landscape orientation).



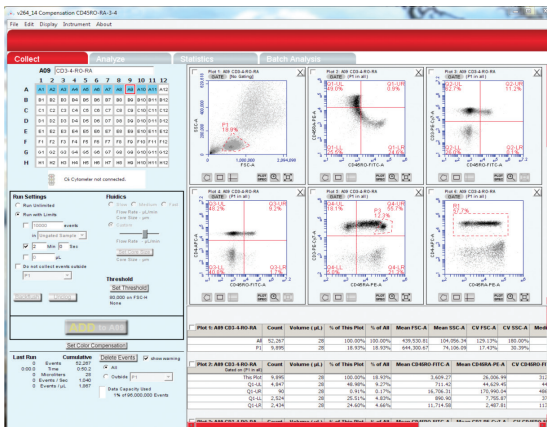
8. Click **Finish**.

FCS Express creates an exact copy of the BD Accuri software workspace displayed as an FCS Express layout. The plots all are scaled and zoomed exactly the same way in FCS Express as in BD Accuri software. Furthermore, all regions, markers, and gating are retained. Parameter names and compensation settings are also applied.

Following is a comparison of data viewed in FCS Express and in BD Accuri software.



Data displayed in FCS Express.



Original BD Accuri software data.

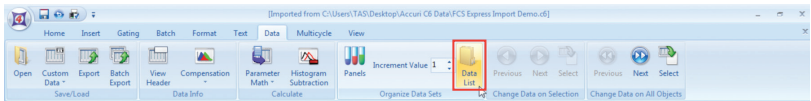
9. At this point, you can use any of the analysis features in FCS Express. De Novo Software has an excellent set of tutorials to help guide you through some of the more common features in FCS Express.

Switching BD Accuri Software Wells (FCS Files) Within FCS Express

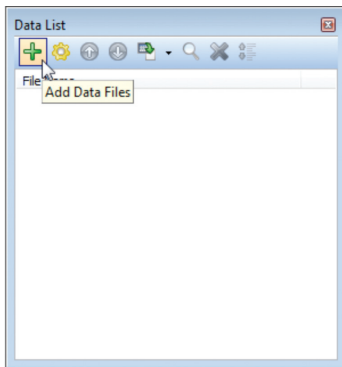
This feature allows you to navigate within the sample wells of a BD Accuri software file without exporting the FCS files.

NOTE: If you selected to import plots from the BD Accuri software **Collect** tab, you have already selected the Sample Well (FCS file) you are viewing. This feature allows you to easily change Sample Wells (FCS files) within the BD Accuri software file without leaving FCS Express.

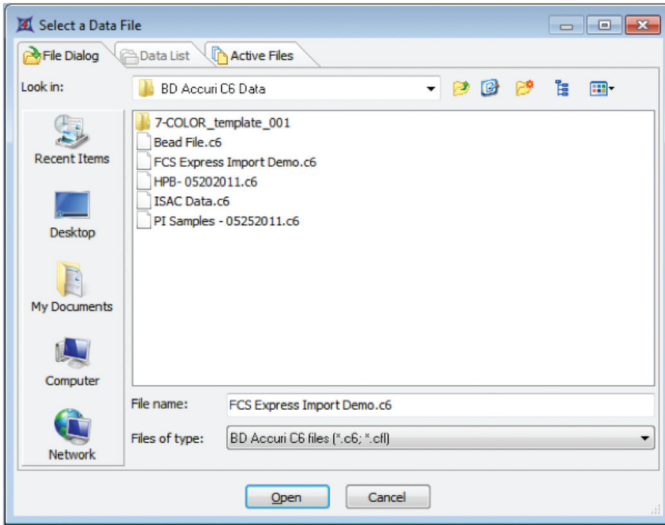
1. Once you have loaded your BD Accuri software layout or created a new plot in FCS Express, Select **Data Tab > Organize Data Sets > Data List** from the ribbon.



2. Click the green plus button to add data files.

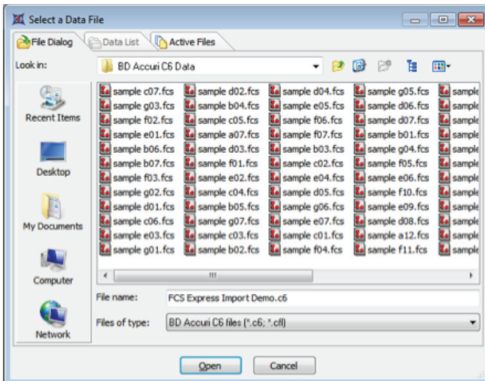


- When the dialog opens to select an FCS file, change the Files of type field to BD Accuri C6 files (*.c6, *.cfl).

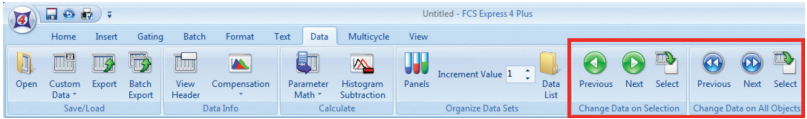


- Select the BD Accuri software file that contains the data you want to view.
 - Click **Open**.
- FCS Express now populates the dialog with all of the Sample Wells that are contained within the BD Accuri software file.
- Ctrl+click or Shift+click to select the files that you want to be included in the list.
 - Click **Open**.

The data list is now populated with those files.



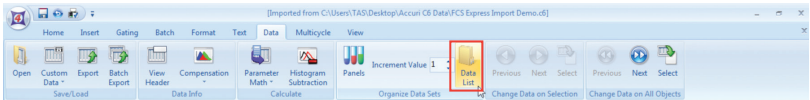
8. You can now navigate Sample Wells by using either the **Data List** or **Next/Previous** commands in the FCS file menu.



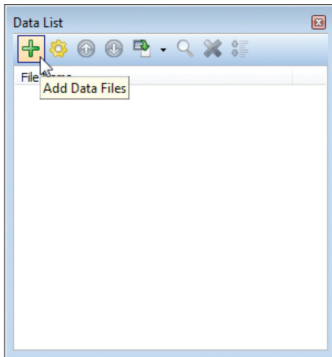
Using the High Content Add-on with BD Accuri Software in FCS Express

The high content add-on in FCS Express allows you to display, gate, and further utilize your plate-based assay acquired with BD Accuri software.

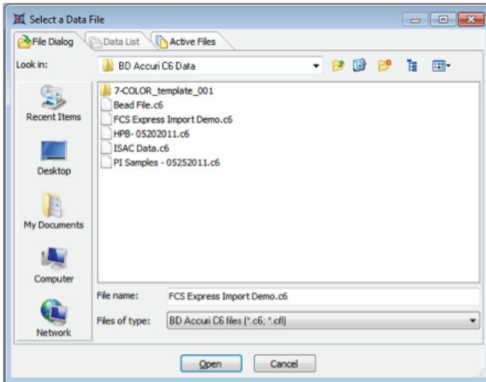
1. Once you have loaded your BD Accuri software layout or created a new plot in FCS Express, Select **Data Tab > Organize Data Sets > Data List** from the ribbon.



2. Click the green plus button to add data files.



- When the dialog opens to select an FCS file, change the **Files of type** field to **BD Accuri C6 files (*.c6)**.

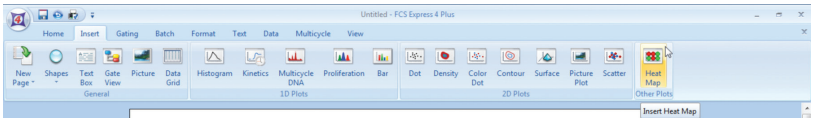


- Select the BD Accuri software file that contains the data you want to view.
- Click **Open**.

The data list will now be populated with the plate-based file.

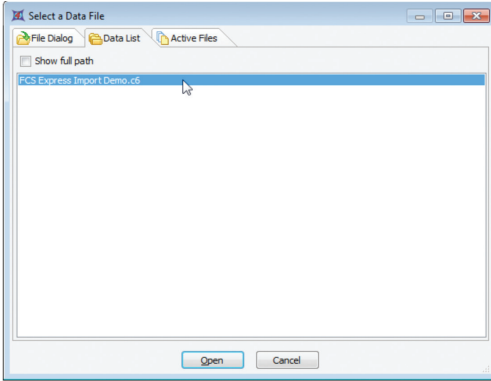
Note: Alternatively, drag the file from its file location into the Data List.

- Select **Insert Tab > Other Plots > Heat Map** from the ribbon.

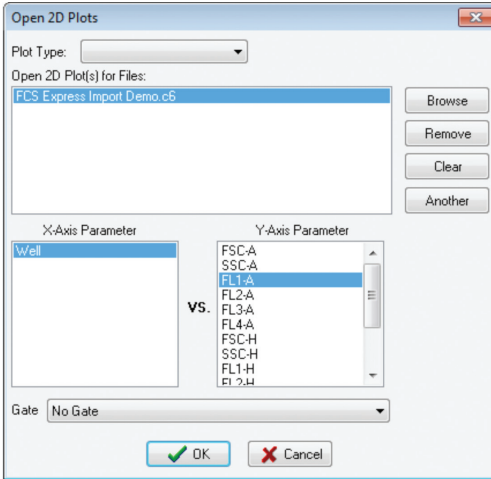


- Click anywhere on the layout to insert the heat map.

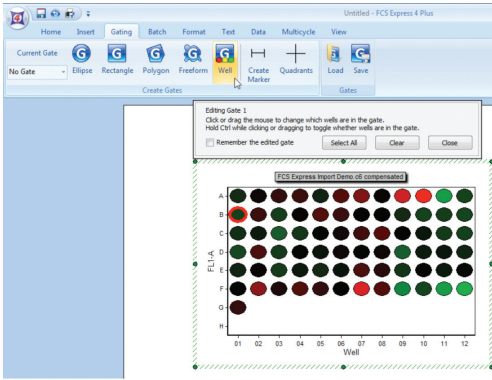
8. Select the data file to use with the heat map in the **Select a Data File > Data List** tab.



9. Click **Open**.
10. Select the parameters you want to display in the heat map.



11. Click OK.
12. You can now select and gate on individual or multiple wells from the **Gating Tab > Create Gates > Well** command from the ribbon.



United States

877.232.8995

Canada

866.979.9408

Europe

32.2.400.98.95

Japan

0120.8555.90

Asia/Pacific

65.6861.0633

Latin America/Caribbean

55.11.5185.9995



Becton, Dickinson and Company

BD Biosciences

2350 Qume Drive

San Jose, CA 95131 USA

(US) Ordering 855.236.2772

BD Accuri Technical Support: 734.994.8000

TechSupport@AccuriCytometers.com

bdbiosciences.com

answers@bd.com