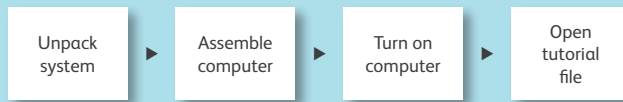


BD Accuri™ C6 Plus System Self-Installation Guide

This guide provides the initial instructions for installing the BD Accuri C6 Plus system. If you have questions, or require further clarification, see the *BD Accuri C6 Plus System User's Guide* or contact technical support.

Self-Installation Overview

The following figure shows the steps for self-installation of the BD Accuri C6 Plus system.



Installation should take approximately 2.5 hours to complete.

Unpacking and installing the computer*

- 1 Unpack the computer workstation, and place it on the right side of the lab workbench.
- 2 Assemble the computer according to the manufacturer's instructions.
- 3 Turn on the computer.
- 4 Open the *BD Accuri C6 Plus Installation* file located on the desktop.

This tutorial will assist you with the self-installation of the cytometer.

* If you did not purchase your computer from BD, assemble your computer according to the manufacturer's instructions. To continue with self-installation of the cytometer, install the *BD Accuri C6 Plus and BD CSampler™ Plus Software and Documentation* CD in your computer, and open the *BD Accuri C6 Plus Installation* file.

If you are outside the US or EU, please contact your local BD support office.

US

ResearchApplications@bd.com
+1.877.232.8995

Europe

techsupport@europe.bd.com

Austria	0810 101 807	Netherlands	0900 0400 142
Belgium	078 166 050	Poland	00800 121 4744
Denmark	8025 0622	Portugal	800 855 717
Finland	0800 915582	Spain	901 988 155
France	0811 290 069	Sweden	0200 883 736
Germany	0800 724 3511	Switzerland	0842 110 022
Ireland	1850 930 396	UK	0845 080 4769
Italy	800 986 931	Other	+32 53 720 882

For more information, go to bdbiosciences.com/accuri.

Class 1 Laser Product.

For Research Use Only. Not for use in diagnostic or therapeutic procedures.

© 2016 BD. BD, the BD Logo and all other trademarks are property of Becton, Dickinson and Company.

23-18170-00



BD Life Sciences
Biosciences
bdbiosciences.com