



# BD Rhapsody™ Scanner Software Installation Guide

---

8/2019

## Overview

This document provides instructions for uninstalling, installing, and launching the BD Rhapsody™ Scanner software. The software installer package comprises of the following installers:

- Scan 1.3.0.x Setup.exe
- Analysis 1.3.0.x Setup.exe
- Diagnostics 1.3.0.x Setup.exe

**NOTE** BD Biosciences recommends updating the scanner software by navigating the installation with keyboard and mouse.

All three software applications must be installed.

During the installation process, create desktop shortcuts for the applications. Otherwise, accept all default options.

# Contents

- Uninstalling scanner software on page 3
- Installing scanner software on page 4
- Starting the scanner software on page 8
- Starting the diagnostics software on page 9

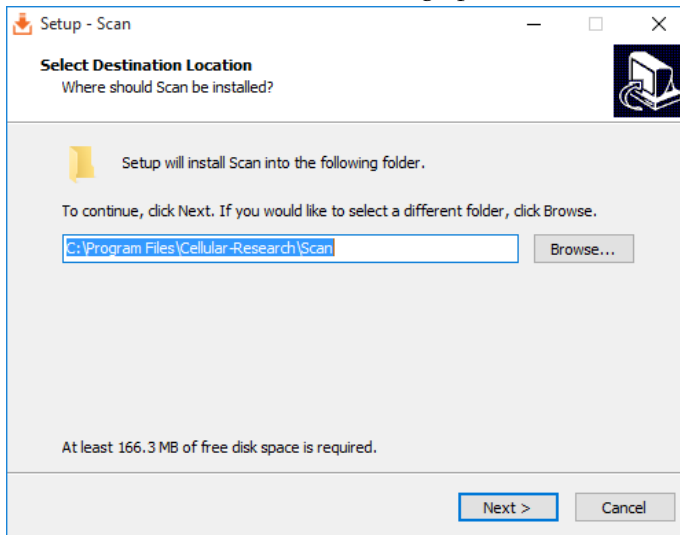
# Uninstalling scanner software

If BD Rhapsody™ Scanner software v1.1.0.2 or earlier is installed, follow the procedure below to uninstall it.

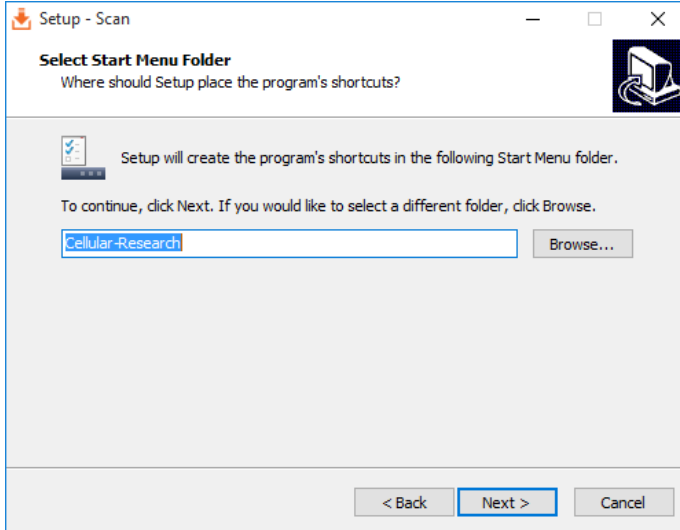
- 1** On the scanner desktop, click **Start** in the lower left corner, and then click **Settings**. The Settings window is displayed.
- 2** Click **System**. A System window is displayed.
- 3** Select the **Apps and features** menu item.
- 4** In the **Apps and features** pane, select **Rhapsody Scanner - Scan 1.1.0.2**.
- 5** Click **Uninstall**, and click **Uninstall** again in the warning dialog. A User Account Control dialog is displayed.
- 6** Click **Yes**, and click **Yes** again in the **Scan Uninstall** warning dialog.
- 7** After the uninstall task is complete, click **OK**.
- 8** Repeat steps 4–7 to uninstall **Select Rhapsody Scanner - Analysis 1.1.0.2**.
- 9** Close the **Settings** window.

# Installing scanner software

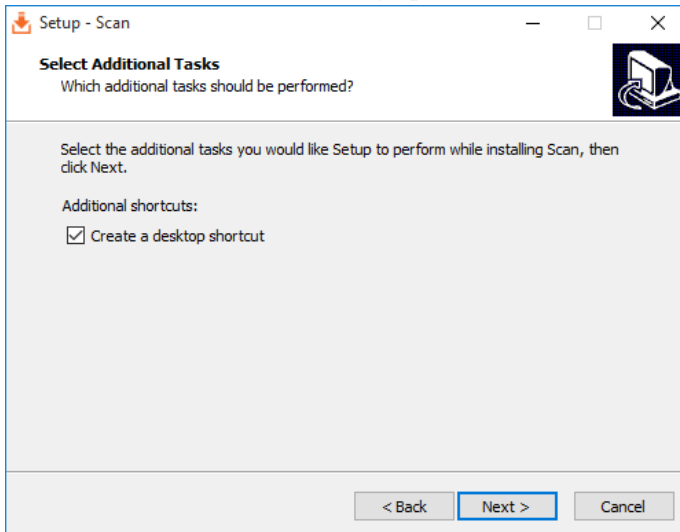
- 1 Insert the USB drive with the scanner software into one of the ports of the scanner.
- 2 In Microsoft® Windows®, open a File Explorer window and navigate to the USB drive directory.
- 3 Double-click **Scan 1.3.0.X Setup.exe**.  
The User Account Control dialog opens.
- 4 Click **Yes**.  
The Select Destination Location dialog opens.



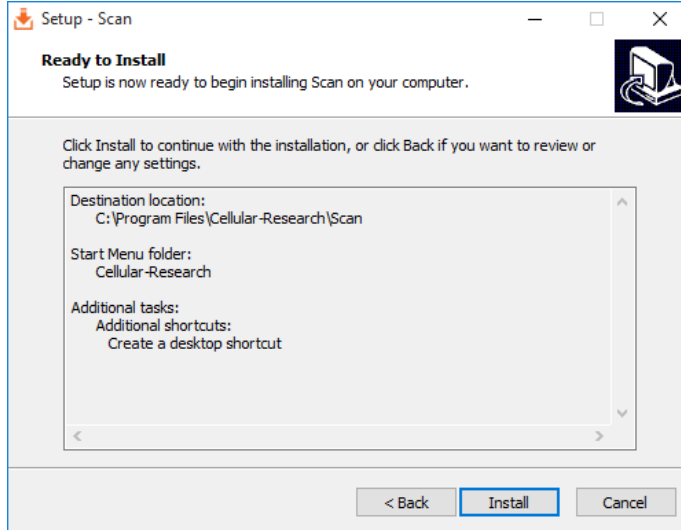
- 5 Click Next.  
The Select Start Menu Folder dialog opens.



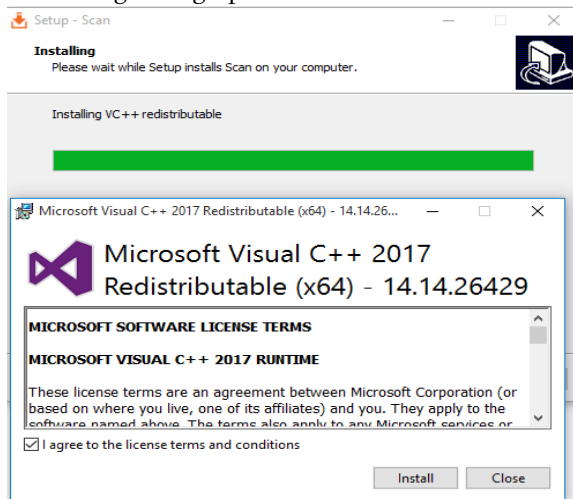
- 6 Click Next.  
The Select Additional Tasks dialog opens.



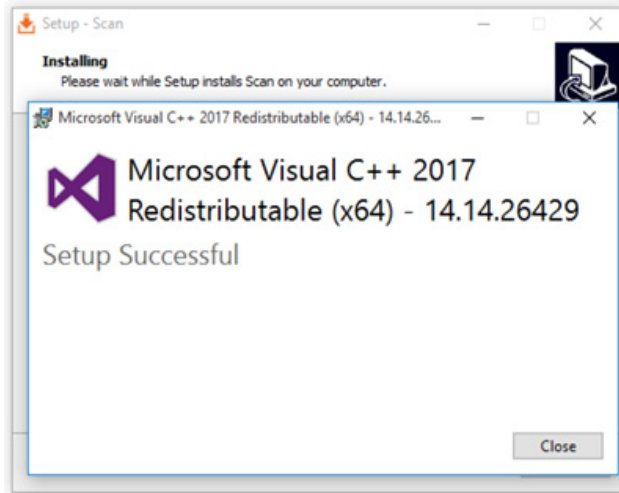
- 7 Select the **Create a desktop shortcut** checkbox, and then click **Next**. The **Ready to Install** dialog opens.



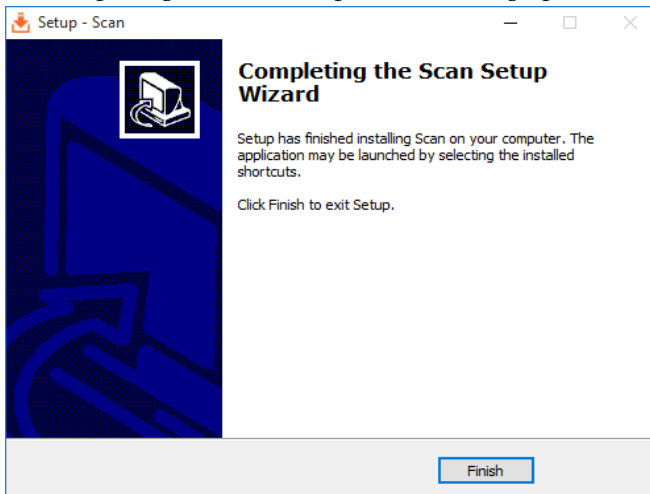
- 8 Click **Install**. The **Installing** dialog opens.



- 9 Select the **I agree to the license terms and conditions** checkbox and click **Install**.  
The **Setup Successful** message is shown.



- 10 Click **Close**.  
The **Completing the Scan Setup Wizard** dialog opens.



- 11 Click **Finish**.

- 12 Repeat steps 3–9 to install **Analysis 1.3.0.X Setup.exe**.
- 13 Repeat steps 3–6 and 9 to install **Diagnostics 1.3.0.X Setup.exe**.

**NOTE** While installing the Diagnostics application, the Microsoft Visual C++ 2017 installation dialog appears only if Microsoft Visual C++ 2017 is not already installed.

## Starting the scanner software

- 1 On the scanner desktop, double-click **Scan**. The scanner software Home page opens.

**NOTE** Upon starting Scan, the Analysis application opens in the background.

- 2 Tap **About** and confirm the scanner software versions for both Scan and Analysis applications.



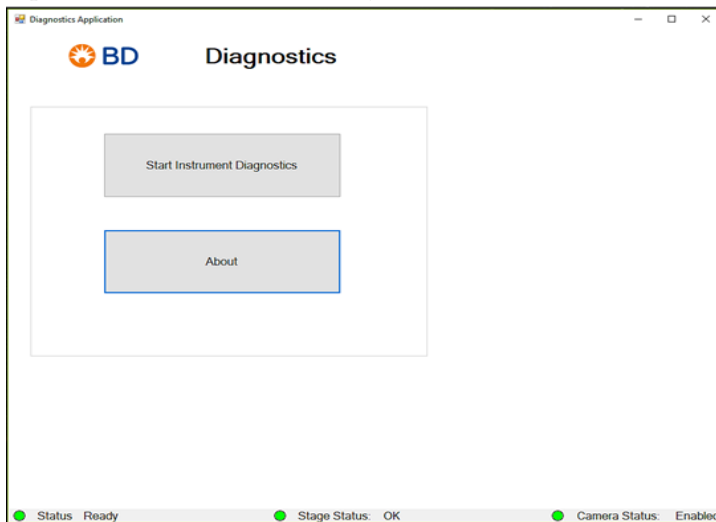
# Starting the diagnostics software

**NOTE** While starting the BD Rhapsody Diagnostic Application Scanner software, ensure that the **Scan** application is not running.

- 1 On the scanner desktop, double-click **Diagnostics**.  
The Diagnostics software home page opens.

**NOTE** A successful start is indicated by three green dots at the bottom of the Diagnostics application screen.

- 2 Tap **About** and confirm the **Diagnostics** software version.



## Copyrights

© 2019 BD. All rights reserved. No part of this publication may be reproduced, transmitted, transcribed, stored in retrieval systems, or translated into any language or computer language, in any form or by any means: electronic, mechanical, magnetic, optical, chemical, manual, or otherwise, without prior written permission from BD Biosciences.

The information in this document is subject to change without notice. BD Biosciences reserves the right to change its products and services at any time to incorporate the latest technological developments. Although this guide has been prepared with every precaution to ensure accuracy, BD Biosciences assumes no liability for any errors or omissions, nor for any damages resulting from the application or use of this information. BD Biosciences welcomes customer input on corrections and suggestions for improvement.

## Trademarks

BD, the BD Logo and Rhapsody are trademarks of Becton, Dickinson and Company or its affiliates. All other trademarks are the property of their respective owners. © 2019 BD. All rights reserved.

## Regulatory Information

For Research Use Only. Not for use in diagnostic or therapeutic procedures.

## History

Revision	Date	Change made
23-20709-00	06/2018	Initial release
23-20709-01	08/2019	—Updated steps to install BD Rhapsody™ Scanner software. —Added steps to install and start BD Rhapsody™ Scanner diagnostics software. —Updated BD Biosciences technical support Email address to <a href="mailto:scomix@bdscomix.bd.com">scomix@bdscomix.bd.com</a> .

23-20709-01  
8/2019

Becton, Dickinson and Company  
BD Biosciences  
2350 Qume Drive  
San Jose, CA 95131 USA  
Tel 1.877.232.8995

BD Biosciences  
European Customer Support  
Tel +32.2.400.98.95  
Fax +32.2.401.70.94  
[help.biosciences@europe.bd.com](mailto:help.biosciences@europe.bd.com)

[bdbiosciences.com](http://bdbiosciences.com)  
[scomix@bdscomix.bd.com](mailto:scomix@bdscomix.bd.com)