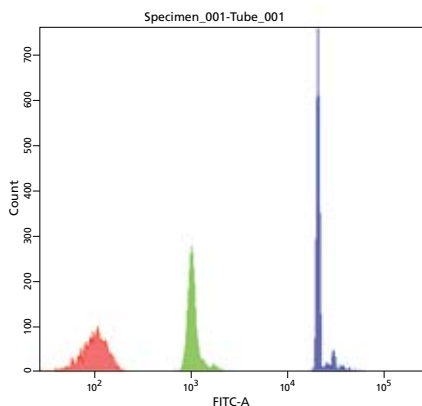


BD Cytometer Setup and Tracking Beads

Features

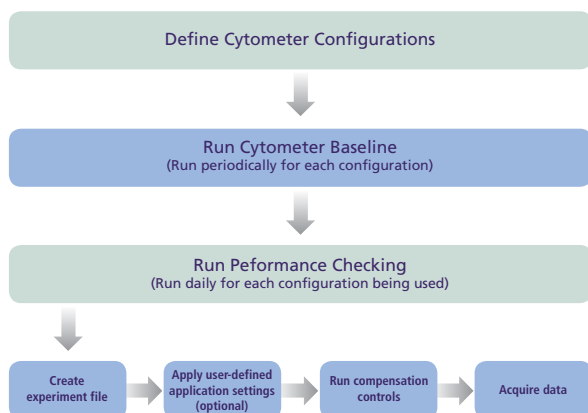
- Simplifies setup with a single vial reagent solution
- Provides cost efficiency with low per-test cost and multiple kit configurations
- Produced under GMP for improved quality and reproducibility
- Enhances cytometer setup workflow, supporting over 20 laser and filter combinations



Cytometer Setup and Tracking beads are excited by all supported lasers and emit in the range of virtually any filter combination.

Digital Multicolor Setup

Workflow using the BD Cytometer Setup and Tracking System



BD™ Cytometer Setup and Tracking Beads, designed for use with BD FACSDiva™ 6.0 or later software, automate the characterization and tracking of BD FACSCanto™, BD FACSCanto™ II, BD FACSAria™, and BD™ LSR II flow cytometer performance. The bead reagent vial contains sufficient volume and concentration to perform 50 daily performance checks or up to 16 baseline characterizations.

The Cytometer Setup and Tracking Beads reagent contains equal concentrations of three polystyrene beads differing in relative intensity: dim, midrange, and bright. All three beads have a low intrinsic CV and contain dyes spanning a wide range of both excitation and emission wavelengths used in many flow cytometry applications.

The Cytometer Setup and Tracking workflow uses Cytometer Setup and Tracking Beads and BD FACSDiva 6.0 or later software to define the cytometer's initial baseline status. During this process, each bead's median fluorescence intensity and robust coefficient of variation are measured in all fluorescence detectors. Software algorithms use this information to determine cytometer settings and performance measurements, automatically determine baseline PMT gains, and provide target values for reproducible application specific settings. Once these baseline measurements are defined, the Cytometer Setup and Tracking Beads are subsequently used to run day-to-day cytometer performance checks. These daily measurements are then tracked within the software using Levey-Jennings graphs, which can be customized to meet user requirements for acceptance.

Together, Cytometer Setup and Tracking Beads and BD FACSDiva 6.0 or later software provide reproducible day-to-day cytometer performance for more data consistency over time.

Specifications

Bead Type	Polystyrene
Bead Sizes	2 micron (dim), 3 micron (midrange and bright)
Volume	3 mL
Solution	PBS with 0.5% BSA and 0.1% Azide
Est. Number of Tests	50 Performance Checks
Fluorophore Compatibility	Indo 1, DAPI, Hoechst, Pacific Blue™, AmCyan, Qdot® 655, Qdot® 700, FITC, PE, PE-Texas Red®, PerCP, PerCP-Cy™5.5, PE-Cy™7, APC, Alexa Fluor® 700, APC-Cy7, APC-HL750
Systems Supported	BD FACSCanto, BD FACSCanto II, BD FACSAria, BD LSR II flow cytometers

Visit bdbiosciences.com for more information.



Class I (1) Laser Product.

BD Cytometer Setup and Tracking beads are For Research Use Only. Not for use in diagnostic or therapeutic procedures. Cy™ is a trademark of Amersham Biosciences Corp. Cy™ dyes are subject to proprietary rights of Amersham Biosciences Corp. and Carnegie Mellon University and are made and sold under license from Amersham Biosciences Corp. only for research use. Any other use requires a commercial sublicense from Amersham Biosciences Corp., 800 Centennial Avenue, Piscataway, NJ 08855-1327, USA.

Alexa Fluor®, Texas Red®, and Qdot® are registered trademarks and Pacific Blue™ is a trademark of Molecular Probes, Inc. BD, BD Logo and all other trademarks are property of Becton, Dickinson and Company. © 2009 BD 23-9388-01

BD Biosciences

2350 Qume Drive
San Jose, CA 95131
US Orders: 877.232.8995
answers@bd.com
bdbiosciences.com