

BD™ Cytometric Bead Array (CBA)

# Human Inflammatory Cytokines Kit

Instruction Manual

Cat. No. 551811



*FCAP Array is a registered trademark of Softflow, Inc.  
Macintosh and Mac are trademarks of Apple Computer, Inc., registered in the US and other countries.  
Microsoft and Windows are registered trademarks of Microsoft Corporation.*

*BD flow cytometers are class I (1) laser products*

*©2008 Becton, Dickinson and Company. All rights reserved. No part of this publication may be reproduced, transmitted, transcribed, stored in retrieval systems, or translated into any language or computer language, in any form or by any means: electronic, mechanical, magnetic, optical, chemical, manual, or otherwise, without prior written permission from BD Biosciences.*

*For research use only. Not for use in diagnostic or therapeutic procedures. Purchase does not include or carry any right to resell or transfer this product either as a stand-alone product or as a component of another product. Any use of this product other than the permitted use without the express written authorization of Becton Dickinson and Company is strictly prohibited.*

*BD, BD Logo and all other trademarks are property of Becton, Dickinson and Company. © 2008 BD*

# Kit Contents

80 Tests (50 samples and 2 standard curves)

(Store the following items at 4°C)

- A1 Human IL-8 Capture Beads: 1 vial, 0.8 ml
- A2 Human IL-1 $\beta$  Capture Beads: 1 vial, 0.8 ml
- A3 Human IL-6 Capture Beads: 1 vial, 0.8 ml
- A4 Human IL-10 Capture Beads: 1 vial, 0.8 ml
- A5 Human TNF Capture Beads: 1 vial, 0.8 ml
- A6 Human IL-12p70 Capture Beads: 1 vial, 0.8 ml
- B Human Inflammatory Cytokines PE Detection Reagent: 1 vial, 4 ml
- C Human Inflammatory Cytokines Standards: 2 vials, 0.2 ml lyophilized
- D Cytometer Setup Beads: 1 vial, 1.5 ml
- E1 PE Positive Control Detector: 1 vial, 0.5 ml
- E2 FITC Positive Control Detector: 1 vial, 0.5 ml
- F Wash Buffer: 1 bottle, 260 ml
- G Assay Diluent: 1 bottle, 30 ml
- H Serum Enhancement Buffer: 1 bottle, 10 ml

# Table of Contents

Introduction . . . . .	6
Principle of the Test . . . . .	7
Advantages . . . . .	7
Limitations . . . . .	8
Reagents Provided . . . . .	8
Bead Reagents. . . . .	8
Antibody and Standard Reagents . . . . .	9
Buffer Reagents. . . . .	9
Warnings and Precautions . . . . .	9
Materials Required but Not Provided . . . . .	10
Overview: BD CBA Human Inflammatory Cytokines Kit Assay Procedures . .	11
Culture Supernatant Assay Procedure. . . . .	11
Serum/Plasma Assay Procedure. . . . .	12
Preparation of Human Inflammatory Cytokines Standards . . . . .	12
Preparation of Mixed Human Inflammatory Cytokines Capture Beads. . . . .	14
Preparation of Mixed Human Inflammatory Cytokines Capture Beads for Serum and Plasma Sample Analysis . . . . .	14
Preparation of Test Samples . . . . .	15
BD CBA Human Inflammatory Cytokines Kit Assay Procedures. . . . .	15
Culture Supernatant Assay Procedure. . . . .	15
Serum/Plasma Assay Procedure. . . . .	16
Cytometer Setup, Data Acquisition, and Analysis . . . . .	17
Preparation of Cytometer Setup Beads . . . . .	17
Instrument Setup with BD FACSComp Software and BD Calibrite Beads. . . . .	18
Instrument Setup with the Cytometer Setup Beads . . . . .	18
Data Acquisition. . . . .	21
Analysis of Sample Data. . . . .	23
Typical Data. . . . .	23

## Table of Contents *(continued)*

Performance . . . . .	25
Theoretical Limit of Detection . . . . .	25
Recovery . . . . .	26
Linearity . . . . .	27
Specificity . . . . .	28
Precision . . . . .	29
Troubleshooting Tips . . . . .	30
References . . . . .	31

## Introduction

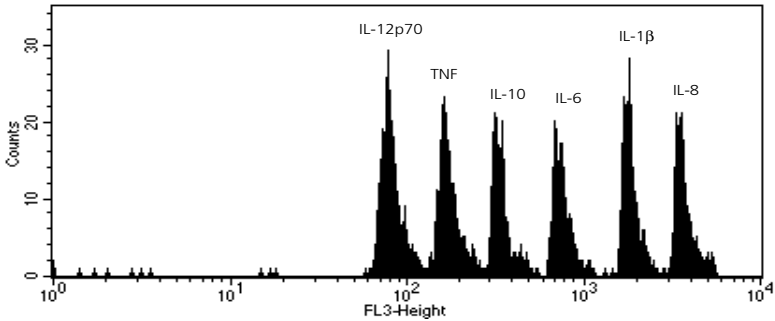
Flow cytometry is an analysis tool that allows for the discrimination of different particles on the basis of size and color. Multiplexing is the simultaneous assay of many analytes in a single sample. The BD™ Cytometric Bead Array (CBA) employs a series of particles with discrete fluorescence intensities to simultaneously detect multiple soluble analytes. The BD CBA is combined with flow cytometry to create a powerful multiplexed assay.

The BD CBA system uses the sensitivity of amplified fluorescence detection by flow cytometry to measure soluble analytes in a particle-based immunoassay. Each bead in a BD CBA Kit provides a capture surface for a specific protein and is analogous to an individually coated well in an ELISA plate. The BD CBA capture bead mixture is in suspension to allow for the detection of multiple analytes in a small volume sample. The combined advantages of the broad dynamic range of fluorescent detection via flow cytometry and the efficient capturing of analytes via suspended particles enable BD CBA to use fewer sample dilutions and to obtain the value of an unknown in substantially less time (compared to conventional ELISA).

The BD CBA Human Inflammatory Cytokines Kit can be used to quantitatively measure Interleukin-8 (IL-8), Interleukin-1 $\beta$  (IL-1 $\beta$ ), Interleukin-6 (IL-6), Interleukin-10 (IL-10), Tumor Necrosis Factor (TNF), and Interleukin-12p70 (IL-12p70) protein levels in a single sample. The kit performance has been optimized for analysis of specific proteins in tissue culture supernatants, EDTA plasma, and serum samples using one of two protocols depending on the sample source.

# Principle of the Test

Six bead populations with distinct fluorescence intensities have been coated with capture antibodies specific for IL-8, IL-1 $\beta$ , IL-6, IL-10, TNF, and IL-12p70 proteins. The six bead populations are mixed together to form the BD CBA, which is resolved in a red channel (ie, FL3 or FL4) of a flow cytometer.



**Figure 1**

The capture beads, PE-conjugated detection antibodies, and recombinant standards or test samples are incubated together to form sandwich complexes. Following acquisition of sample data using the flow cytometer, the sample results are generated in graphical and tabular format using the BD CBA Analysis Software or FCAP Array™ Software. The kit provides sufficient reagents for the quantitative analysis of 50 test samples and the generation of two standard curve sets.

## Advantages

The BD CBA provides several advantages when compared with conventional ELISA methodology:

- The required sample volume is approximately one-sixth the quantity necessary for conventional ELISA assays due to the detection of six analytes in a single sample.
- A single set of diluted standards is used to generate a standard curve for each analyte.
- A BD CBA experiment takes less time than a single ELISA and provides results that would normally require six conventional ELISAs.

## Limitations

The limit of detection of the BD CBA Human Inflammatory Cytokines Kit is comparable to conventional ELISA, but due to the complexity and kinetics of this multi-analyte assay, the actual limit of detection in a given experiment may vary slightly (see *Theoretical Limit of Detection* and *Precision* information on page 25 and 29 respectively).

The BD CBA is not recommended for use on stream-in-air instruments where signal intensities may be reduced, adversely affecting assay sensitivity. Stream-in-air instruments include the BD FACStar™ Plus and BD FACSVantage™ flow cytometers.

Serum spike recoveries for IL-1 $\beta$ , TNF, and IL-12p70 are lower than for the other proteins in this assay. This variation is due to assay conditions and serum proteins and may affect quantitation of these proteins in serum samples.

The sensitivity for the detection of IL-1 $\beta$  in this assay is less than for the other proteins measured. It is possible that, due to operator variation, instrument settings, and instrument performance, the 20 pg/ml standard curve point for IL-1 $\beta$  may not have signal intensity above the 0 pg/ml background level.

Quantitative results or protein levels for the same sample or recombinant protein run in ELISA and BD CBA assays may differ. A spike recovery assay can be performed using an ELISA standard followed by BD CBA analysis to assess possible differences in quantitation.

This kit is designed to be used as an integral unit. Do not mix components from different batches or kits.

## Reagents Provided

### Bead Reagents

**Human Inflammatory Cytokines Capture Beads (A1 – A6):** The specific capture beads, having discrete fluorescence intensity characteristics, are distributed from brightest to dimmest as follows:

Bead	Specificity
<b>(Brightest) A1</b>	IL-8
A2	IL-1 $\beta$
A3	IL-6
A4	IL-10
A5	TNF
<b>(Dimmest) A6</b>	IL-12p70

A single 80-test vial of each specific capture bead (A1 – A6) is included in this kit. Store at 4°C. Do not freeze.

*Note:* The antibody-conjugated beads will settle out of suspension over time. It is necessary to vortex the vial vigorously for 3 – 5 seconds before taking a bead suspension aliquot.

**Cytometer Setup Beads (D):** A single, 30-test vial of setup beads for setting the initial instrument PMT voltages and compensation settings is sufficient for 10 instrument setup procedures. The Cytometer Setup Beads are formulated for use at 50  $\mu$ l/test.



## Antibody and Standard Reagents

**Human Inflammatory Cytokines PE Detection Reagent (B):** An 80-test vial of PE-conjugated anti-human IL-8, IL-1 $\beta$ , IL-6, IL-10, TNF, and IL-12p70 antibodies formulated for use at 50  $\mu$ l/test. Store at 4°C. Do not freeze.

**Human Inflammatory Cytokines Standards (C):** Two vials containing lyophilized recombinant human proteins. Each vial should be reconstituted in 2.0 ml of Assay Diluent to prepare the top standard. Store at 4°C.

*Note:* The Human Inflammatory Cytokines Standards vials are stable until the kit expiration date. Following reconstitution, store the freshly reconstituted 10 $\times$  bulk standard at 2 – 8°C and use within 12 hours.

**PE Positive Control Detector (E1):** A 10-test vial of PE-conjugated antibody control formulated for use at 50  $\mu$ l/test. This reagent is used with the Cytometer Setup Beads to set the initial instrument compensation settings. Store at 4°C. Do not freeze.

**FITC Positive Control Detector (E2):** A 10-test vial of FITC-conjugated antibody control formulated for use at 50  $\mu$ l/test. This reagent is used with the Cytometer Setup Beads to set the initial instrument compensation settings. Store at 4°C. Do not freeze.

## Buffer Reagents

**Wash Buffer (F):** One 260 ml bottle of phosphate buffered saline (PBS) solution (1 $\times$ ), containing protein\* and detergent, used for wash steps and to resuspend the washed beads for analysis. Store at 4°C.

**Assay Diluent (G):** A single, 30 ml bottle of a buffered protein\* solution (1 $\times$ ) used to reconstitute and dilute the Human Inflammatory Cytokines Standards and to dilute test samples. Store at 4°C.

**Serum Enhancement Buffer (H):** A single, 10 ml bottle of a buffered protein\* solution (1 $\times$ ) used to dilute mixed Capture Beads when testing serum or plasma samples. Store at 4°C.

## Warnings and Precautions

### *Hazardous Ingredients:*

#### Sodium Azide:

Components A1 - A6, B, D, E1 - E2, F, G, and H contain 0.09% sodium azide. Sodium azide yields a highly toxic hydrazoic acid under acidic conditions. Dilute azide compounds in running water before discharging to avoid accumulation of potentially explosive deposits in plumbing.

\* Source of all serum proteins is from USDA inspected abattoirs located in the United States.

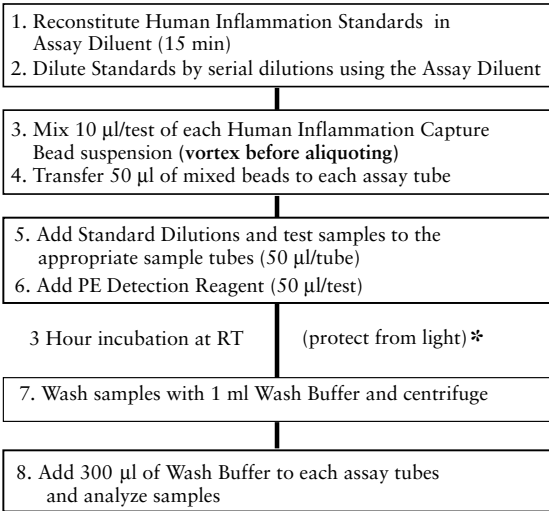
## Materials Required but Not Provided

In addition to the reagents provided in the BD CBA Human Inflammatory Cytokines Kit, the following items are also required:

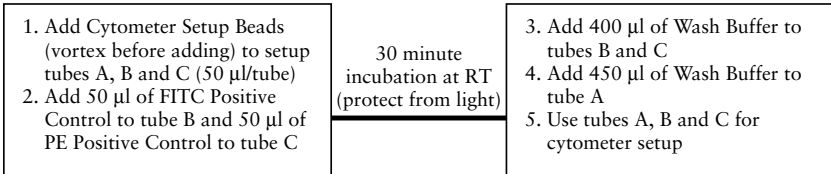
- A flow cytometer equipped with a 488 nm laser capable of detecting and distinguishing fluorescence emissions at 576 and 670 nm (eg, BD FACScan™ or BD FACSCalibur™ instruments) and BD CellQuest™ Software.
- 12 × 75 mm sample acquisition tubes for a flow cytometer (eg, BD Falcon™ Cat. No. 352008).
- BD CBA Software, or FCAP Array software (Cat. No. 641488).  
*Note:* The BD CBA Software is no longer available for purchase but is still supported on existing compatible systems.
- BD Calibrite™ 3 Beads, (Cat. No. 340486).

# Overview: BD CBA Human Inflammatory Cytokines Kit Assay Procedures

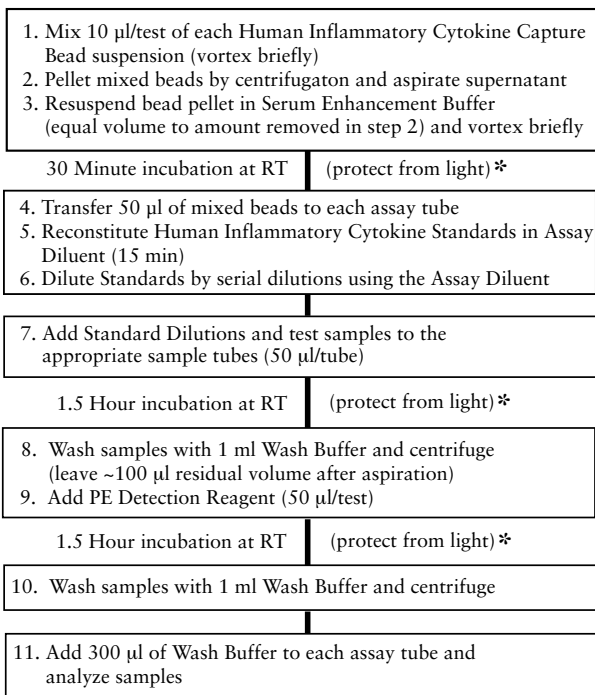
## Culture Supernatant Assay Procedure



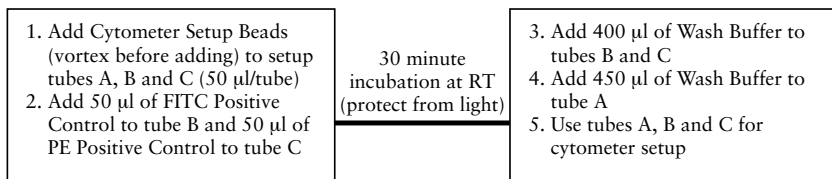
### \*Cytometer Setup Bead Procedure



## Serum/Plasma Assay Procedure



### \*Cytometer Setup Bead Procedure

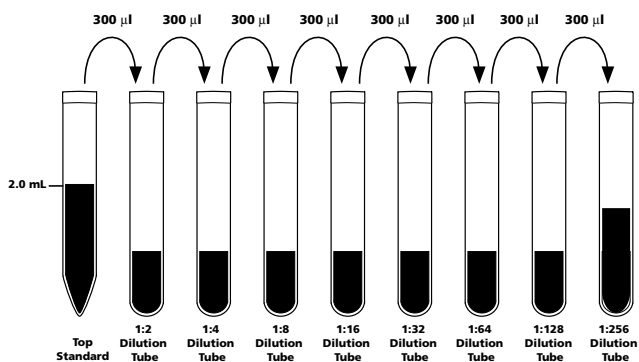


## Preparation of Human Inflammatory Cytokines Standards

The Human Inflammatory Cytokines Standards are lyophilized and should be reconstituted and serially diluted before mixing with the Capture Beads and the PE Detection Reagent.

1. Open one vial of lyophilized Human Inflammatory Cytokines Standards. Transfer the standard spheres to a polypropylene tube (eg, 15 ml Conical Tube, BD Falcon Cat. No. 352097). Label the tube "Top Standard".

2. Reconstitute the standards with 2.0 ml of Assay Diluent. Allow the reconstituted standard to equilibrate for at least 15 minutes before making dilutions. **Mix reconstituted protein by pipette only. Do not vortex or mix vigorously.**
3. Label 12 × 75 mm tubes (BD Falcon Cat. No. 352008) and arrange them in the following order: 1:2, 1:4, 1:8, 1:16, 1:32, 1:64, 1:128 and 1:256.
4. Pipette 300 µl of Assay Diluent to each of the remaining tubes.
5. Perform a serial dilution by transferring 300 µl from the Top Standard to the 1:2 dilution tube and mix thoroughly. Continue making serial dilutions by transferring 300 µl from the 1:2 tube to the 1:4 tube and so on to the 1:256 tube and mix thoroughly (see *Figure 2*). **Mix by pipette only, do not vortex.** Prepare one tube containing Assay Diluent to serve as the 0 pg/ml negative control.



**Figure 2.** Preparation of Human Inflammatory Cytokines Standard Dilutions

The approximate concentration (pg/ml) of recombinant protein in each dilution tube is shown in Table 1.

**Table 1.** Human Inflammatory Cytokines Standard concentrations after dilution

Protein (pg/ml)	Top Standard	1:2 Dilution Tube	1:4 Dilution Tube	1:8 Dilution Tube	1:16 Dilution Tube	1:32 Dilution Tube	1:64 Dilution Tube	1:128 Dilution Tube	1:256 Dilution Tube
Human IL-8	5000	2500	1250	625	312.5	156	80	40	20
Human IL-1 $\beta$	5000	2500	1250	625	312.5	156	80	40	20
Human IL-6	5000	2500	1250	625	312.5	156	80	40	20
Human IL-10	5000	2500	1250	625	312.5	156	80	40	20
Human TNF	5000	2500	1250	625	312.5	156	80	40	20
Human IL-12p70	5000	2500	1250	625	312.5	156	80	40	20

## Preparation of Mixed Human Inflammatory Cytokines Capture Beads

The Capture Beads are bottled individually, and it is necessary to pool the bead reagents (A1 – A6) immediately before mixing them together with the PE Detection Reagent, standards, or samples. It is recommended that this procedure be used for preparing the mixed Human Inflammatory Cytokines Capture Beads for experiments in which cell culture supernatant samples will be analyzed. For experiments testing serum or plasma samples, refer to *Preparation of Mixed Human Inflammatory Cytokines Capture Beads for Serum and Plasma Sample Analysis*, below.

1. Determine the number of assay tubes (including standards and controls) that are required for the experiment (eg, 8 unknowns, 9 standard dilutions, and 1 negative control = 18 assay tubes).
2. Vigorously vortex each Capture Bead suspension for a few seconds before mixing.
3. Add a 10  $\mu$ l aliquot of each Capture Bead, for each assay tube to be analyzed, into a single tube labeled “mixed Capture Beads” (eg, 10  $\mu$ l of IL-8 Capture Beads  $\times$  18 assay tubes = 180  $\mu$ l of IL-8 Capture Beads required).
4. Vortex the Bead mixture thoroughly.

The mixed Capture Beads are now ready to be transferred to the assay tubes (50  $\mu$ l of mixed Capture beads/tube) as described in *BD CBA Human Inflammatory Cytokines Kit Assay Procedures*, page 15.

*Note:* Discard excess mixed Capture Beads. Do not store after mixing.

## Preparation of Mixed Human Inflammatory Cytokines Capture Beads for Serum and Plasma Sample Analysis

It is recommended that the following procedure be followed for preparing the mixed Human Inflammatory Cytokines Capture Beads for experiments in which serum and plasma samples will be analyzed. Use of this procedure will reduce the chances of false-positive results due to the effects of serum or plasma proteins. This procedure may also be used with cell culture supernatant samples.

1. Follow steps 1 – 4 under Preparation of Mixed Human Inflammatory Cytokines Capture Beads, above.
2. Centrifuge mixed Capture Beads at 200  $\times$  g for 5 minutes.
3. Carefully aspirate and discard the supernatant.
4. Resuspend the mixed Capture Beads pellet in Serum Enhancement Buffer (equal volume to amount removed in step 3) and vortex thoroughly.
5. Incubate the assay tubes for 30 minutes at RT and protect from direct exposure to light.

The mixed Capture Beads are now ready to be transferred to the assay tubes (50  $\mu$ l of mixed Capture Beads/tube) as described in *BD CBA Human Inflammatory Cytokines Kit Assay Procedures*, page 15.

*Note:* Discard excess mixed Capture Beads. Do not store after mixing.

## Preparation of Test Samples

The standard curve for each protein covers a defined set of concentrations from 20 – 5000 pg/ml. It may be necessary to dilute test samples to ensure that their mean fluorescence values fall within the limits or range of the generated standard curve. For best results, samples that are known or assumed to contain high levels of a given protein should be diluted as described below.

1. Dilute test sample by the desired dilution factor (ie, 1:2, 1:10, or 1:100) using the appropriate volume of Assay Diluent.
2. Mix sample dilutions thoroughly before transferring samples to the appropriate assay tubes containing mixed Capture Beads and PE Detection Reagent.

## BD CBA Human Inflammatory Cytokines Kit Assay Procedures

Following the preparation and dilution of the standards and mixing of the capture beads, transfer these reagents and test samples to the appropriate assay tubes for incubation and analysis. The serum/plasma assay procedure (page 16) should be used for any experiment testing serum or plasma samples. The serum/plasma assay procedure also works for culture supernatant. **In order to calibrate the flow cytometer and quantitate test samples, it is necessary to run the Inflammatory Cytokines Standards and the Cytometer Setup controls in each experiment.** See *Table 2* for a detailed description of the reagents added to the Inflammatory Cytokines Standard control assay tubes. The Cytometer Setup procedure is described on page 17.

### Culture Supernatant Assay Procedure

1. Add 50  $\mu$ l of the mixed Capture Beads (prepared using the procedure described in *Preparation of Mixed Human Inflammatory Cytokines Capture Beads*, page 14) to the appropriate assay tubes. Vortex the mixed Capture Beads before adding to the assay tubes.
2. Add 50  $\mu$ l of the Human Inflammatory Cytokines PE Detection Reagent to the assay tubes.
3. Add 50  $\mu$ l of the Human Inflammatory Cytokines Standard dilutions to the control assay tubes.
4. Add 50  $\mu$ l of each test sample to the test assay tubes.
5. Incubate the assay tubes for 3 hours at RT and protect from direct exposure to light. During this incubation, perform the Cytometer Setup procedure described on pages 17 and 18.
6. Add 1 ml of Wash Buffer to each assay tube and centrifuge at  $200 \times g$  for 5 minutes.
7. Carefully aspirate and discard the supernatant from each assay tube.
8. Add 300  $\mu$ l of Wash Buffer to each assay tube to resuspend the bead pellet.
9. Begin analyzing samples on a flow cytometer. **Vortex each sample for 3 – 5 seconds immediately before analyzing on the flow cytometer.**

## Serum/Plasma Assay Procedure

1. Add 50  $\mu$ l of the mixed Capture Beads (prepared using the procedure described in *Preparation of Mixed Human Inflammatory Cytokines Capture Beads for Serum and Plasma Sample Analysis*, page 14) to the appropriate assay tubes. Vortex the mixed Capture Beads before adding to the assay tubes.
2. Add 50  $\mu$ l of the Human Inflammatory Cytokines Standard dilutions to the control assay tubes.
3. Add 50  $\mu$ l of each test sample to the test assay tubes.
4. Incubate the assay tubes for 1.5 hours at RT and protect from direct exposure to light.
5. Add 1 ml of Wash Buffer to each assay tube and centrifuge at  $200 \times g$  for 5 minutes.
6. Carefully aspirate and discard the supernatant, leaving approximately 100  $\mu$ l of liquid in each assay tube. Aspiration should be done as consistently as possible.
7. Add 50  $\mu$ l of the Human Inflammatory Cytokines PE Detection Reagent to the assay tubes. Gently agitate assay tubes to resuspend bead pellet.
8. Incubate the assay tubes for 1.5 hours at RT and protect from direct exposure to light. During this incubation, perform the Cytometer Setup procedure described on pages 17 and 18.
9. Add 1 ml of Wash Buffer to each assay tube and centrifuge at  $200 \times g$  for 5 minutes.
10. Carefully aspirate and discard the supernatant from each assay tube.
11. Add 300  $\mu$ l of Wash Buffer to each assay tube to resuspend the bead pellet.
12. Begin analyzing samples on a flow cytometer. **Vortex each sample for 3 – 5 seconds immediately before analyzing on the flow cytometer.**

*Note:* It is necessary to analyze CBA samples on the day of the experiment. Prolonged storage of samples, once the assay is complete, can lead to increased background and reduced sensitivity.



**Table 2. Essential control assay tubes**

<b>Tube No.</b>	<b>Reagents (All reagent volumes are 50 µl)</b>
1 (Negative Control 0 pg/ml Standards)	mixed Capture Beads, PE Detection Reagent, Assay Diluent
2 (20 pg/ml Standards)	mixed Capture Beads, PE Detection Reagent, Inflammation Standards 1:256 Dilution
3 (40 pg/ml Standards)	mixed Capture Beads, PE Detection Reagent, Inflammation Standards 1:128 Dilution
4 (80 pg/ml Standards)	mixed Capture Beads, PE Detection Reagent, Inflammation Standards 1:64 Dilution
5 (156 pg/ml Standards)	mixed Capture Beads, PE Detection Reagent, Inflammation Standards 1:32 Dilution
6 (312 pg/ml Standards)	mixed Capture Beads, PE Detection Reagent, Inflammation Standards 1:16 Dilution
7 (625 pg/ml Standards)	mixed Capture Beads, PE Detection Reagent, Inflammation Standards 1:8 Dilution
8 (1250 pg/ml Standards)	mixed Capture Beads, PE Detection Reagent, Inflammation Standards 1:4 Dilution
9 (2500 pg/ml Standards)	mixed Capture Beads, PE Detection Reagent, Inflammation Standards 1:2 Dilution
10 (5000 pg/ml Standards)	mixed Capture Beads, PE Detection Reagent, Inflammation Standards "Top Standard"

## Cytometer Setup, Data Acquisition, and Analysis

The Cytometer setup information in this section is for the BD FACScan and BD FACSCalibur flow cytometers. The BD FACSComp software is useful for setting up the flow cytometer. BD CellQuest Software is required for analyzing samples and formatting data for subsequent analysis using the BD CBA Software or FCAP Array Software.

Additional setup protocols for the BD FACSCalibur flow cytometer (dual laser), BD FACSArray™ bioanalyzer, and other BD FACS brand flow cytometers can be found at [bdbiosciences.com/cbasetup](http://bdbiosciences.com/cbasetup).

### Preparation of Cytometer Setup Beads

1. Add 50 µl of Cytometer Setup Beads to three cytometer setup tubes labeled A, B, and C.
2. Add 50 µl of FITC Positive Control Detector to tube B.
3. Add 50 µl of PE Positive Control Detector to tube C.
4. Incubate tubes A, B, and C for 30 minutes at room temperature and protect from direct exposure to light.
5. Add 450 µl of Wash Buffer to tube A and 400 µl of Wash Buffer to tubes B and C.

## Instrument Setup with BD FACSComp Software and BD Calibrite Beads

1. Perform instrument start up.
2. Perform flow check.
3. Prepare tubes of BD Calibrite beads and open BD FACSComp software.
4. Launch BD FACSComp software.
5. Run BD FACSComp software in Lyse/No Wash mode.
6. Proceed to Instrument Setup with the Cytometer Setup Beads.

*Note:* For detailed information on using BD FACSComp with BD Calibrite beads to set up the flow cytometer, refer to the BD FACSComp Software User's Guide and the BD Calibrite Beads Package Insert. Version 4.2 contains a BD CBA preference setting to automatically save a BD CBA calibration file at the successful completion of any Lyse/No Wash assay. The BD CBA calibration file provides the optimization for FSC, SSC, and threshold settings as described in *Instrument Setup with the Cytometer Setup Beads*, Steps 3 – 5. Optimization of the fluorescence parameter settings is still required (ie, PMT and compensation settings, see *Instrument Setup with the Cytometer Setup Beads*, Step 6).

## Instrument Setup with the Cytometer Setup Beads

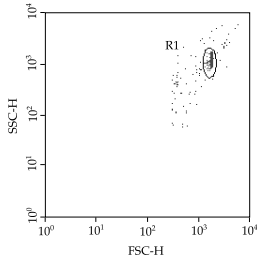
1. Launch BD™ CellQuest Software and open the CBA Instrument Setup template.

*Note:* The BD CBA Instrument Setup template can be found on the BD FACStation™ CD for Macintosh computers in the BD CBA folder. This file may also be downloaded via the internet from: [bdbiosciences.com/cbatemplates](http://bdbiosciences.com/cbatemplates)
2. Set the instrument to Acquisition mode.

*Note:* The data will be evaluated in five parameters (FSC, SSC, FL1, FL2, and FL3). Turn off additional detectors.
3. Set SSC (side light scatter) and FSC (forward light scatter) to Log mode.
4. Decrease the SSC PMT voltage by 100 from what BD FACSComp set.
5. Set the Threshold to SSC at 650.
6. In setup mode, run Cytometer Setup Beads tube A.

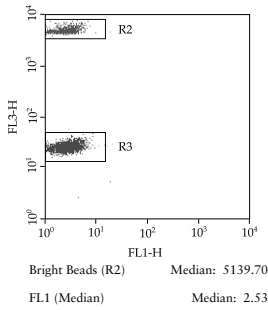
*Note:* Pause and restart acquisition frequently during the instrument setup procedure in order to reset detected values after settings adjustments.

Adjust gate R1 so that the singlet bead population is located in gate R1 (*Figure 3a*).



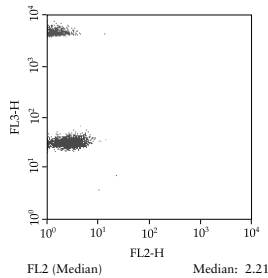
**Figure 3a**

Adjust the FL3 PMT so that the median intensity of the top FL3 bead population is around 5000 (*Figure 3b*). Adjust gate R3 as necessary so that the dim FL3 bead population is located in gate R3 (*Figure 3b*). Do not adjust the R2 gate.



**Figure 3b**

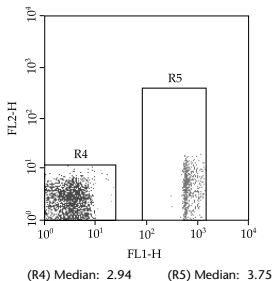
Adjust the FL1 PMT so that the median of FL1 is approximately 2.0 – 2.5 (*Figure 3b*). Adjust the FL2 PMT value so that the median of FL2 is approximately 2.0 – 2.5 (*Figure 3c*).



**Figure 3c**

Run Cytometer Setup Beads tube B to adjust the compensation settings for FL2 – %FL1.

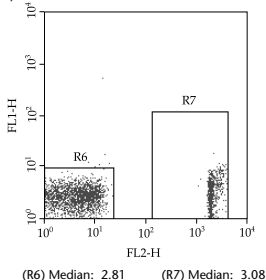
Adjust gate R5 as necessary so that the FL1 bright bead population is located in gate R5 (*Figure 3d*). Using the FL2 – %FL1 control, adjust the median of R5 to equal the median of R4 (*Figure 3d*).



**Figure 3d**

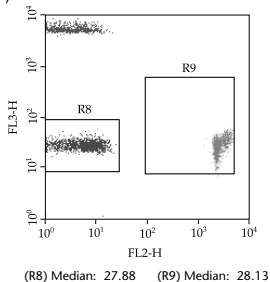
Run Cytometer Setup Beads tube C to adjust the compensation settings for FL1 – %FL2 and FL3 – %FL2.

Adjust gate R7 so that the FL2 bright bead population is located in gate R7 (*Figure 3e*). Using the FL1 – %FL2 control, adjust the median of R7 to equal the median of R6 (*Figure 3e*).



**Figure 3e**

Adjust gate R9 so that the FL2 bright bead population is located in gate R9 (*Figure 3f*). Using the FL3 – %FL2 control, adjust the median of R9 to equal the median of R8 (*Figure 3f*).



**Figure 3f**

Set the FL2 – %FL3 to 0.1 if necessary. Save and print the optimized instrument settings.

## Data Acquisition

1. Open the Acquisition template.

*Note:* The acquisition template may be downloaded via the internet from: [bdbiosciences.com/cbatemplates](http://bdbiosciences.com/cbatemplates)

2. Set acquisition mode and retrieve the optimized instrument settings from *Instrument Setup with the Cytometer Setup Beads*, page 18.
3. In the Acquisition and Storage window, set the resolution to 1024.
4. Set number of events to be counted at 1800 of R1 gated events. (This will ensure that the sample file contains approximately 300 events per Capture Bead).
5. Set number of events to be collected to “all events”. Saving all events collected will ensure that no true bead events are lost due to incorrect gating.
6. In setup mode, run tube no. 1 and using the FSC vs. SSC dot plot, place the R1 region gate around the singlet bead population (see *Figure 3a*).
7. Samples are now ready to be acquired.
8. Begin sample acquisition with the flow rate set at HIGH.

*Note:* Run the negative control tube (0 pg/ml standards) before any of the recombinant standard tubes. Run the control assay tubes before any unknown test assay tubes. Run the tubes in the order listed in *Table 2*, page 17.

File names must be alphanumeric (ie, contain at least one letter).

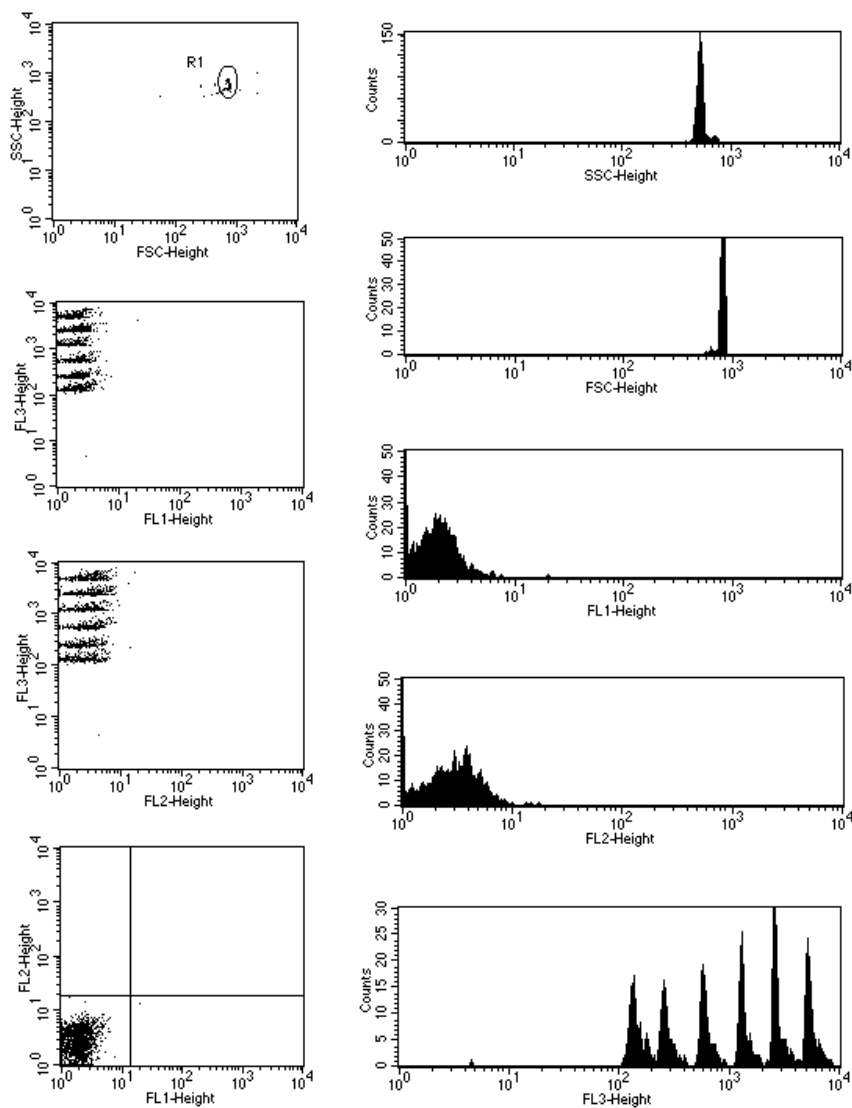
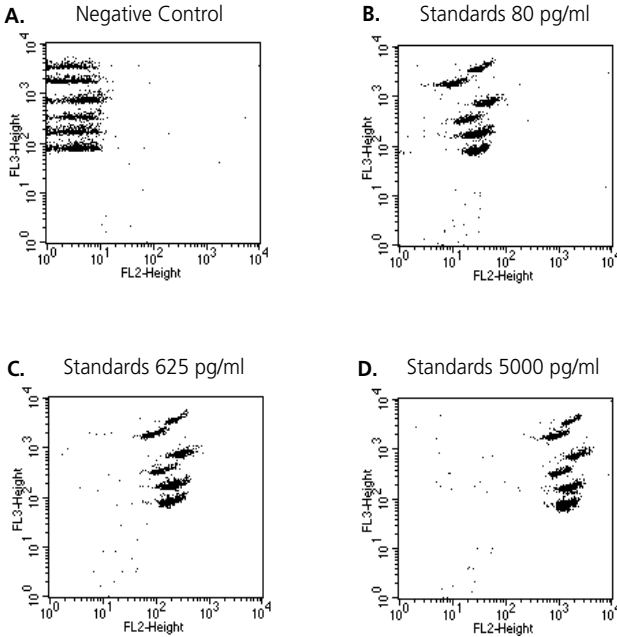


Figure 4. Acquisition Template Example

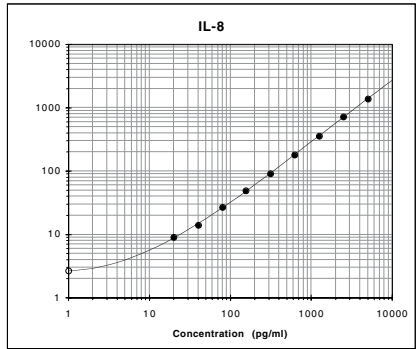
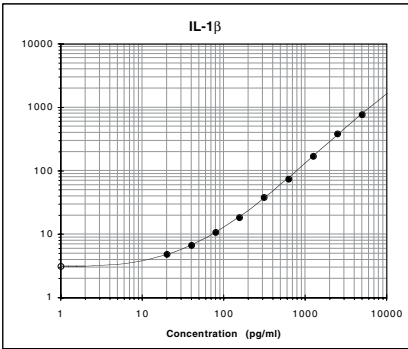
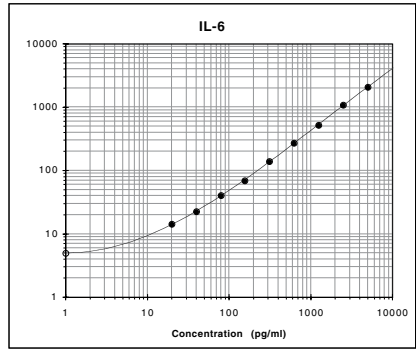
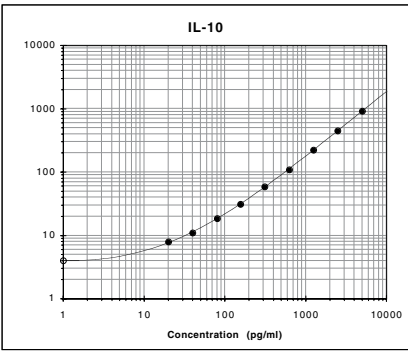
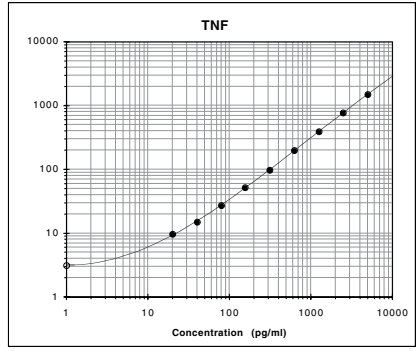
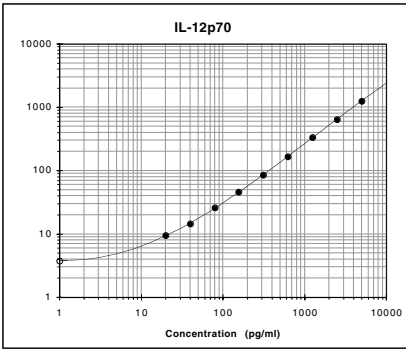
## Analysis of Sample Data

The analysis of BD CBA data can be accomplished using BD CBA Software or FCAP Array software. For BD CBA Software, please refer to the User's Guide for instructions. For FCAP Array software, please visit the following link for instructions: [bdbiosciences.com/docs/kitanalysis](http://bdbiosciences.com/docs/kitanalysis)

## Typical Data



**Figure 5.** BD CellQuest Data Examples for Standards and Detectors Alone



**Figure 6.** Example of Standard Curves



# Performance

The BD CBA Human Inflammatory Cytokines Kit assay has been rigorously tested for the following: theoretical limit of detection, spike recovery, dilution linearity, specificity, and intra- and inter-assay precision.

Recovery and linearity results for cell-culture supernatant are using the culture supernatant assay procedure, and the serum/plasma recovery and linearity results are using the serum/plasma assay protocol.

## Theoretical Limit of Detection

The individual standard curve range for a given protein defines the minimum and maximum quantifiable levels using the BD CBA Human Inflammatory Cytokines Kit (ie, 20 pg/ml and 5000 pg/ml). By applying the 4-parameter curve fit option, it is possible to extrapolate values for sample intensities not falling within the limits of the standard curve. It is up to the researcher to decide the best method for calculating values for unknown samples using this assay. The theoretical limit of detection for each protein using the BD CBA Human Inflammatory Cytokines Kit is defined as the corresponding concentration at two standard deviations above the median fluorescence of 20 replicates of the negative control (0 pg/ml).

Cytokine	Median Fluorescence	Standard Deviation	Limit of Detection (pg/ml)
IL-8	3.4	0.4	3.6 pg/ml
IL-1 $\beta$	3.7	0.3	7.2 pg/ml
IL-6	4.7	0.4	2.5 pg/ml
IL-10	4.1	0.4	3.3 pg/ml
TNF	3.9	0.3	3.7 pg/ml
IL-12p70	4.0	0.3	1.9 pg/ml

## Recovery

Individual protein was spiked into various matrices at three different levels within the assay range. The matrices used in these experiments were not diluted before addition of the protein. The plasma samples in these experiments were EDTA treated. Results are compared with the same concentrations of the proteins spiked in the Assay Diluent, as follows:

Cytokine	Matrix	Standard spike concentration (pg/ml)	Observed in given matrix (pg/ml)	% Recovery
IL-8	Pooled Donor Sera (n = 5)	2500	2145	86%
		625	548	88%
		80	66	82%
IL-8	Pooled Donor Plasma (n = 5)	2500	2051	82%
		625	473	76%
		80	53	67%
IL-8	Cell culture supernatant	2500	2709	108%
		625	661	106%
		80	91	113%
IL-1 $\beta$	Pooled Donor Sera (n = 5)	2500	1656	66%
		625	424	68%
		80	42	52%
IL-1 $\beta$	Pooled Donor Plasma (n = 5)	2500	1776	71%
		625	403	65%
		80	47	58%
IL-1 $\beta$	Cell culture supernatant	2500	2813	113%
		625	623	100%
		80	81	101%
IL-6	Pooled Donor Sera (n = 5)	2500	1713	69%
		625	484	78%
		80	55	69%
IL-6	Pooled Donor Plasma (n = 5)	2500	2254	90%
		625	573	92%
		80	73	92%
IL-6	Cell culture supernatant	2500	2646	106%
		625	592	95%
		80	81	101%
IL-10	Pooled Donor Sera (n = 5)	2500	2016	81%
		625	556	89%
		80	67	84%
IL-10	Pooled Donor Plasma (n = 5)	2500	2308	92%
		625	589	94%
		80	70	88%
IL-10	Cell culture supernatant	2500	2449	98%
		625	600	96%
		80	79	99%
TNF	Pooled Donor Sera (n = 5)	2500	1507	60%
		625	419	67%
		80	45	56%
TNF	Pooled Donor Plasma (n = 5)	2500	1851	74%
		625	457	73%
		80	55	69%
TNF	Cell culture supernatant	2500	2864	115%
		625	665	107%
		80	88	110%
IL-12p70	Pooled Donor Sera (n = 5)	2500	1366	55%
		625	368	59%
		80	46	57%
IL-12p70	Pooled Donor Plasma (n = 5)	2500	1752	70%
		625	409	65%
		80	53	66%
IL-12p70	Cell culture supernatant	2500	2540	102%
		625	600	96%
		80	81	101%

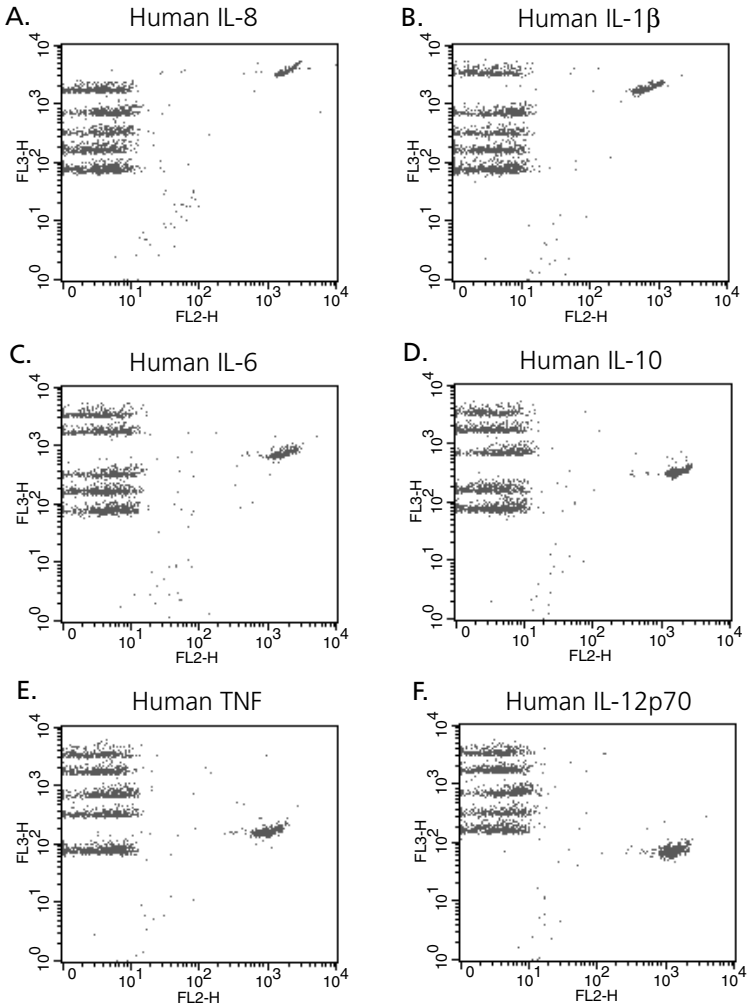
## Linearity

In two experiments, the following matrices were spiked with IL-8, IL-1 $\beta$ , IL-6, IL-10, TNF, and IL-12p70 and were then serially diluted with Assay Diluent.

Matrix	Dilution	Observed IL-8 (pg/ml)	Observed IL-1 $\beta$ (pg/ml)	Observed IL-6 (pg/ml)
Pooled Donor Sera (n = 5)	Neat	4468	2884	3410
	1:2	2583	1815	2016
	1:4	1363	900	1017
	1:8	618	458	486
	1:16	322	248	278
	1:32	129	102	99
	1:64	76	61	69
	1:128	39	46	32
	1:256	19	26	14
	Slope	1.00	0.88	1.00
	Pooled Donor Plasma (n = 5)	Neat	4493	3692
1:2		2582	2049	2654
1:4		1405	1130	1301
1:8		697	572	651
1:16		347	275	315
1:32		169	138	160
1:64		80	72	81
1:128		43	37	43
1:256		22	23	19
Slope		0.98	0.95	1.00
Cell Culture Medium		Neat	5200	5800
	1:2	2520	2665	2590
	1:4	1260	1291	1280
	1:8	602	596	635
	1:16	296	312	310
	1:32	154	143	150
	1:64	74	74	75
	1:128	39	39	41
	1:256	19	17	20
	Slope	1.01	1.04	1.01
	Matrix	Dilution	Observed IL-10 (pg/ml)	Observed TNF (pg/ml)
Pooled Donor Sera (n = 5)	Neat	4662	3213	2962
	1:2	2452	2038	1757
	1:4	1204	1041	963
	1:8	559	519	470
	1:16	304	302	252
	1:32	129	124	109
	1:64	79	83	67
	1:128	36	35	30
	1:256	18	17	15
	Slope	1.01	0.95	0.97
	Pooled Donor Plasma (n = 5)	Neat	5408	4284
1:2		4284	2270	2359
1:4		2270	1223	1218
1:8		1223	648	643
1:16		648	294	309
1:32		294	166	165
1:64		166	84	83
1:128		84	44	42
1:256		44	20	21
Slope		0.91	0.96	0.97
Cell Culture Medium		Neat	5100	6000
	1:2	2494	2597	2560
	1:4	1302	1241	1283
	1:8	643	606	618
	1:16	329	320	302
	1:32	156	157	154
	1:64	74	78	72
	1:128	40	45	42
	1:256	19	23	20
	Slope	1.01	0.99	1.02

## Specificity

The antibody pairs used in the BD CBA Human Inflammatory Cytokines Kit assay have been screened for specific reactivity with their specific proteins. Analysis of samples containing only a single recombinant protein found no cross-reactivity or background detection of protein in other Capture Bead populations using this assay.



**Figure 7.** BD CellQuest Data for Detection of Individual Cytokines

## Precision

The precision results shown for intra- and inter-assay reproducibility were generated using the serum/plasma assay procedure. Most CV values are slightly improved when using the culture supernatant assay procedure due to reduced sample handling.

**Intra-assay:** Ten replicates of each of three different levels of IL-8, IL-1 $\beta$ , IL-6, IL-10, TNF, and IL-12p70 were tested.

Cytokine	IL-8			IL-1 $\beta$		
Actual Mean Conc. (pg/ml):	74	578	2221	69	540	2220
SD	3	12	104	5	19	129
% CV	4%	2%	5%	7%	4%	6%

Cytokine	IL-6			IL-10		
Actual Mean Conc. (pg/ml):	77	557	2171	76	551	2116
SD	5	25	163	5	25	121
% CV	6%	5%	8%	6%	5%	6%

Cytokine	TNF			IL-12p70		
Actual Mean Conc. (pg/ml):	70	527	1971	74	562	2094
SD	6	34	207	3	19	132
% CV	9%	6%	10%	4%	3%	6%

**Inter-assay:** Three different levels of IL-8, IL-1 $\beta$ , IL-6, IL-10, TNF, and IL-12p70 (80, 625 and 2500 pg/ml) were tested in four experiments conducted by different operators.

Cytokine	IL-8			IL-1 $\beta$		
Number of Replicates:	8	8	8	8	8	8
Actual Mean Conc. (pg/ml):	74	626	2618	69	589	2594
SD	3	24	172	9	55	196
% CV	4%	4%	7%	13%	9%	8%

Cytokine	IL-6			IL-10		
Number of Replicates:	8	8	8	8	8	8
Actual Mean Conc. (pg/ml):	78	630	2669	77	644	2669
SD	6	55	271	6	57	306
% CV	8%	9%	10%	8%	9%	11%

Cytokine	TNF			IL-12p70		
Number of Replicates:	8	8	8	8	8	8
Actual Mean Conc. (pg/ml):	74	631	2607	77	654	2563
SD	6	94	351	5	49	223
% CV	8%	15%	13%	6%	7%	9%

**Note:** The number of replicates refers to the total number of assay tubes tested at a given concentration of protein.

## Troubleshooting Tips

<b>Problem</b>	<b>Suggested Solution</b>
<b>Variation between duplicate samples.</b>	Vortex Capture Beads before pipetting. Beads can aggregate.
<b>Low bead number in samples.</b>	Avoid aspiration of beads during wash step. Do not wash or resuspend beads in volumes higher than recommended volumes.
<b>High background.</b>	Test various sample dilutions, the sample may be too concentrated. Remove excess Human Inflammation PE Detection Reagent by increasing the number of wash steps as the background may be due to non-specific binding.
<b>Little or no detection of protein in sample.</b>	Sample may be too dilute. Try various sample dilutions.
<b>Less than six bead populations are observed during analysis or distribution is unequal.</b>	Ensure that equal volumes of beads were added to each assay tube. Vortex Capture Bead vials before taking aliquots. Once Capture Beads are mixed, vortex to ensure that the beads are distributed evenly throughout the solution.
<b>Debris (FSC/SSC) during sample acquisition.</b>	Increase FSC threshold or further dilute samples. Increase number of wash steps if necessary. Make a tighter FSC/SSC region gate around the bead population.
<b>Overlap of bead population fluorescence (FL3) during acquisition.</b>	This may occur in samples with very high protein concentration. Ensure that instrument settings have been optimized using the Cytometer Setup Beads.
<b>Standards assay tubes show low fluorescence or poor standard curve.</b>	Check that all components are properly prepared and stored. Use a new vial of standard with each experiment and once reconstituted, do not use after 12 hours. Ensure that incubation times were of proper length.
<b>All samples are positive or above the high standard mean fluorescence value.</b>	Dilute the samples further. The samples may be too concentrated.
<b>Biohazardous samples.</b>	It is possible to treat samples briefly with 1% paraformaldehyde before analyzing on the flow cytometer. However, this may affect assay performance and should be validated by the user.

*Note:* For best performance, vortex samples immediately before analyzing on a flow cytometer.

*Note:* The BD CBA Human Inflammatory Cytokines Kit assay has been shown to detect IL-8, IL-6, and TNF, produced by the activation of cells from the non-human primate rhesus and cynomolgus models. Direct quantitation of proteins from the rhesus and cynomolgus models has not been validated using this kit and results may vary.

## References

1. Bishop, J.E. and K.A. Davis. 1997. A flow cytometric immunoassay for  $\beta$ 2-microglobulin in whole blood. *J. Immunol. Methods* 210:79-87.
2. Camilla C., J.P. Defoort, M. Delaage, R. Auer, J. Quintana, T. Lary, R. Hamelik, S. Prato, B. Casano, M. Martin and V. Fert. 1998. A new flow cytometry-based multi-assay system. 1. Application to cytokine immunoassays. *Cytometry Suppl.* 8:132.
3. Carson, R., and D. Vignali. 1999. Simultaneous quantitation of fifteen cytokines using a multiplexed flow cytometric assay. *J. Immunol. Methods* 227: 41-52.
4. Chen, R., L. Lowe, J.D. Wilson, E. Crowther, K. Tzeggai, J.E. Bishop and R. Varro. 1999. Simultaneous quantification of six human cytokines in a single sample using microparticle-based flow cytometric technology. *Clin. Chem.* 9:1693-1694.
5. Collins, D. P., B.J. Luebering and D.M. Shaut. 1998. T-lymphocyte functionality assessed by analysis of cytokine receptor expression, intracellular cytokine expression, and femtomolar detection of cytokine secretion by quantitative flow cytometry. *Cytometry* 33:249-55.
6. Fulton, R., R. McDade, P. Smith, L. Kienker, J. Kettman, Jr. 1997. Advanced multiplexed analysis with the FlowMetrix system. *Clin. Chem.* 43: 1749 -1756.
7. Kricka, L.J. 1996. Simultaneous multianalyte immunoassays. In *Immunoassay*. Diamandis, E.P. and T.K. Christopoulos, eds. Academic Press. pp.389-404.
8. Lund-Johansen, F., K. Davis, J. Bishop and R. de W. Malefyt. 2000. Flow cytometric analysis of immunoprecipitates: High-throughput analysis of protein phosphorylation and protein-protein interactions. *Cytometry* 39:250-259.
9. McHugh, T.M. 1994. Flow microsphere immunoassay for the quantitative and simultaneous detection of multiple soluble analytes. *Methods in Cell Biology* 42:575-595.
10. Oliver, K.G., J.R. Kettman and R.J. Fulton. 1998. Multiplexed analysis of human cytokines by use of the FlowMetrix system. *Clin. Chem.* 44:2057-60.
11. Stall, A., Q. Sun, R. Varro, L. Lowe, E. Crowther, B. Abrams, J. Bishop, and K. Davis. 1998. A single tube flow cytometric multibead assay for isotyping mouse monoclonal antibodies. Abstract LB77. Experimental Biology Meeting 1998 (late-breaking abstracts).
12. Cook, E.B., J.L. Stahl, L. Lowe, R. Chen, E. Morgan, J. Wilson, R. Varro, A. Chan, F.M. Graziano, and N.P. Barney. 2001. Simultaneous measurement of six cytokines in a single sample of human tears using microparticle-based flow cytometry: allergics vs. non-allergics. *J. Immunol. Methods* 254: 109-118.
13. Dotti, G., B. Salvoldo, S. Takahashi, T. Goltsova, M. Brown, D. Rill, C. Rooney, and M. Brenner. 2001. Adenovector-induced expression of human-CD40-ligand (hCD40L) by multiple myeloma cells: A model for immunotherapy. *Exp. Hematol.* 29: 952 - 961.











**United States**

877.232.8995

**Canada**

888.259.0187

**Europe**

32.24.009.895

**Japan**

0120.8555.90

**Asia/Pacific**

65.6861.0633

**Latin America/Caribbean**

55.11.5185.9995



**BD Biosciences**

10975 Torreyana Road

San Diego, CA 92121

Customer/Technical Service

Tel 877.232.8995 (US)

Fax 800.325.9637

**[bdbiosciences.com](http://bdbiosciences.com)**