



BD FACSLyric™ Flow Cytometer integrated with the BD FACSDuet™ Sample Preparation System

Discover a powerful new level of performance to move the pace
of your lab forward



THE DIFFERENCE IS A LAB IN RHYTHM



Efficient¹

A study demonstrated that samples prepared with 20x BD Multitest™ 6-Color TBNK Reagent + BD Trucount™ Tubes on the automated BD FACSDuet™ System integrated with BD FACSLytic™ Flow Cytometer vs manual preparation led to:

- 20% reduction in total process time*
- 99% reduction of error-prone steps
- 75% reduction in hands-on time*
- Reduced staff training time



Standardized

- Preprogrammed preparation methods
- Traceability of specimens, reagents, antibody cocktails and samples



Flexible

- Ability to create preparation methods
- Modular and upgradeable design to adapt to evolving laboratory needs
- Automated on-board cocktail preparation
- Compatibility with a wide range of reagent vial sizes and manufacturers

* Results may vary depending on user factors, including protocol and assay being performed. The results are based on an efficiency study completed by Barts Health NHS Foundation Trust, Royal London Hospital, UK. Automated vs manual preparation when 2 people are dedicated to the task.



The BD FACSDuet™ Sample Preparation System combines automation, simplicity and consistency. Physically integrated with the BD FACSLyric™ Flow Cytometer, this complete walkaway sample-to-answer solution can help drive your laboratory to higher productivity.

The system integrates seamlessly into your laboratory workflow providing standardization with flexibility to meet your needs. Designed as a modular system, with an intuitive and easy-to-use touchscreen software interface, the BD FACSDuet™ System changes the way you have always experienced sample preparation and flow cytometry.



Efficient because....

Reduces the time to results and increases workflow consistency

- Handling of up to 3 carriers and worklists simultaneously to increase specimen throughput
- Reduction in hands-on time creates lab capacity for handling increasing work volume¹
- Physically integrated with the BD FACSLyric™ Flow Cytometer for automated transfer of ready-to-acquire samples providing a true walkaway solution

Reduces variability and errors

- Standardized protocols and automated specimen and reagent pipetting reduce variability in sample preparation, eliminating critical error prone steps and leading to more accurate results

Minimizes the manual inputs required from users

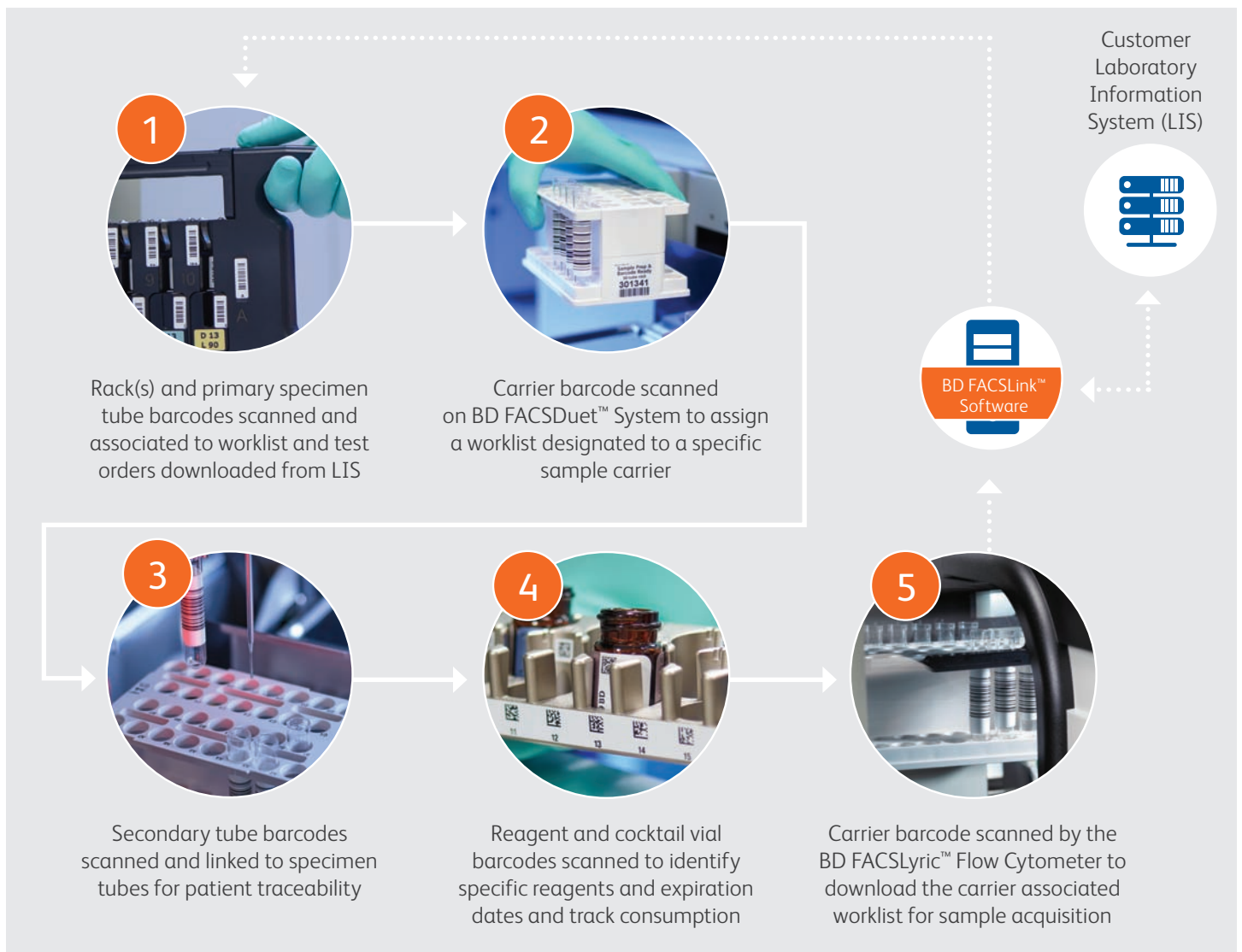
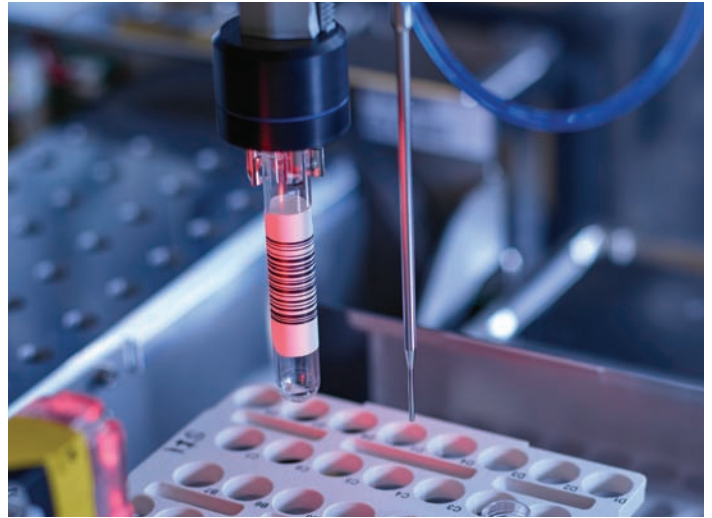
- Bidirectional communication with the laboratory information system (LIS) automates worklist preparation and eliminates the risk of generating errors when manually transcribing data
- Smart barcode reading enables automated worklist(s) tracking

Minimizes user training with intuitive touchscreen interface

Standardized because...

Enables consistent workflows

- Complete traceability of specimens, samples, reagents, cocktails and worklists throughout the entire workflow
- Standardized preparation methods reduce variability and opportunities for errors
- Automated cocktailing functionality eliminates manual steps, ensuring consistent and error-free creation of multicolor antibody cocktails





Flexible because....

- Allows users to create their own preparation methods
- Accommodates 20 different specimen tube types
- Accommodates various reagent vial sizes for a total of 46 reagents on-board from a wide range of manufacturers
- Allows users to create reagent cocktails with up to 45 unique reagents
- Delivers an upgradable and modular design to adapt to the evolving needs of each laboratory

Closing thoughts *(from actual users)...*

“What’s the potential impact of the BD FACSDuet™ [Sample Preparation System]? It removes our manual processes, increases our efficiency and throughput, and gives us control in standardization of processes. It’s a controlled environment.”

*Mr. David Bloxham, Principal Biomedical Scientist,
Haematology-Oncology Diagnostic Service (HODS),
Cambridge University Hospital NHS Trust, Cambridge, UK*

“At last, a fully integrated end-to-end walkaway solution, which is going to make our lives significantly easier. It reduces errors...leading to increased productivity and efficiency...provides a comprehensive fully auditable account of the whole process...creates capacity to allow us to meet our key performance indicators.”

*Dr. Timothy Farren, Head of Immunophenotyping
(Specialist Integrated Haematological Malignancy
Diagnostic Service, SIHMDS), Barts Health NHS Trust, UK*

“I require all the monoclonal antibodies used, the ancillary reagents, tubes, the QC materials to be linked to an exact patient...this is an essential laboratory process but it’s also mandatory in order to maintain ISO15189 accreditation.”

*Mr. Chris Scott, Lead Biomedical Scientist,
Immunology Department, Barts Health NHS Trust, UK*

1. A study by Barts Health NHS Foundation Trust, Royal London Hospital, UK, measured the total process time, total hands-on time and reduction in error-prone steps. Data was presented in ESCCA 2018 industrial partner event.

Both BD FACSLyric™ Flow Cytometer and BD FACSDuet™ Sample Preparation System are Class 1 Laser Products. The BD FACSLyric™ Flow Cytometer is for In Vitro Diagnostic Use with BD FACSuite™ Clinical Application for up to six colors. The BD FACSLyric™ Flow Cytometer is for Research Use Only with BD FACSuite™ Application for up to 12 colors. Not for use in diagnostic or therapeutic procedures.

BD FACSDuet™ Sample Preparation System is for In Vitro Diagnostic Use. Sample preparation for user-defined protocols and cocktail functions are for Research Use Only. Not for diagnostic or therapeutic procedures.

BD Life Sciences, San Jose, CA, 95131, USA

bdbiosciences.com

BD, the BD Logo, FACSDuet, FACSLink, FACSLyric, FACSuite, Multitest, and Trucount are trademarks of Becton, Dickinson and Company or its affiliates. All other trademarks are the property of their respective owners. © 2021 BD. All rights reserved. BD-26318 (v3.0) 0221

