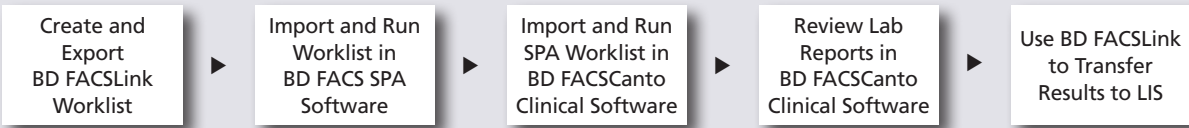


# Quick Reference Guide for Using BD Panels with BD FACS SPA and BD FACSCanto Clinical Software and the BD FACSLink LIS Interface

This guide contains instructions for using BD panels in BD FACSCanto™ clinical software\* v2.4 and BD FACS™ SPA software\* versions 3.0.1 and 4.0.1 with the BD FACSLink™ laboratory information system (LIS) interface.

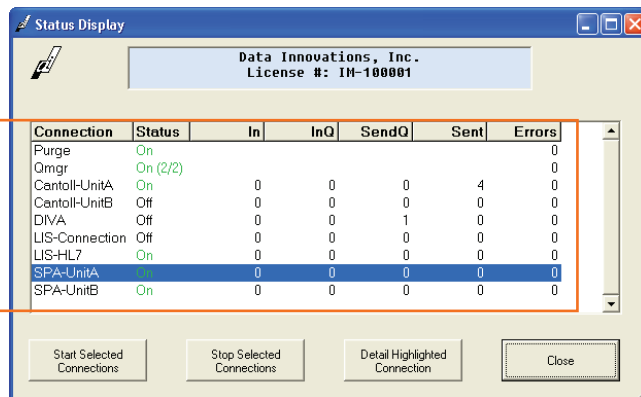
## Workflow Overview



Helping all people live healthy lives

## Creating and Exporting a Worklist in BD FACSLink (Instrument Manager) Software

- 1 Start Instrument Manager software and log in.
- 2 Select the appropriate connection in the **Status Display** dialog.

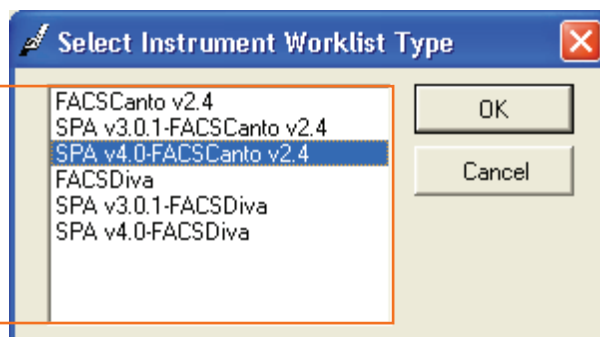


Select the SPA connection you want and then click the **Detail Highlighted Connection** button.

- 3 Display the **BD FACSLink** window and create a new worklist.



Click the **New Worklist** button.



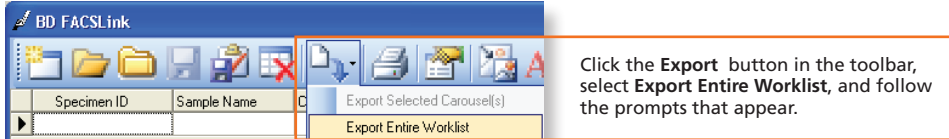
Select the appropriate worklist type.

\* BD FACSCanto and BD FACSCanto II flow cytometers and BD FACS Sample Prep Assistant II and III (SPA II and III) are for In Vitro Diagnostic Use.

- Enter the appropriate information in the **Specimen ID** and **Carousel ID** fields for each specimen.

Specimen ID	Sample Name	Case Number	Panel	Carousel ID	Start	End	Unique Carousel ID	Tube Type	Primary Rack Position
a1234		a12341	6 Color TBNK + ...	1	TBD	TBD		BD Vacutainer	TBD

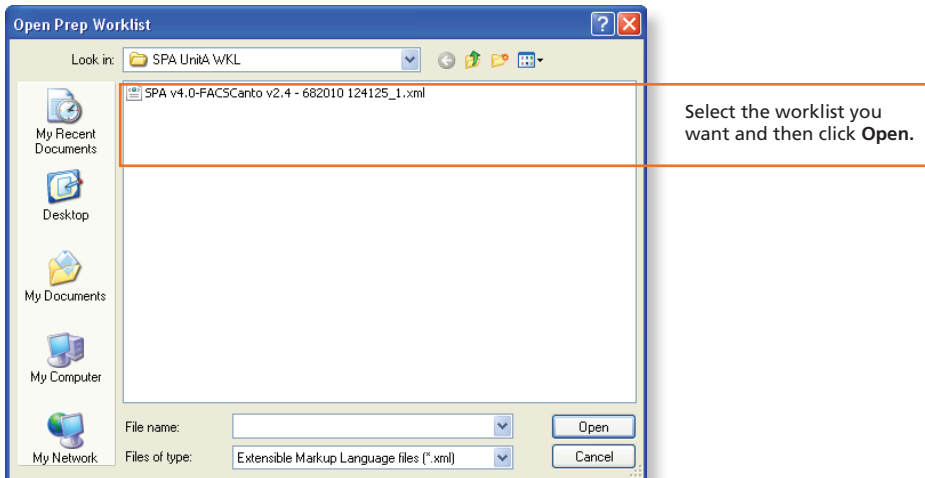
- Export and save the worklist.



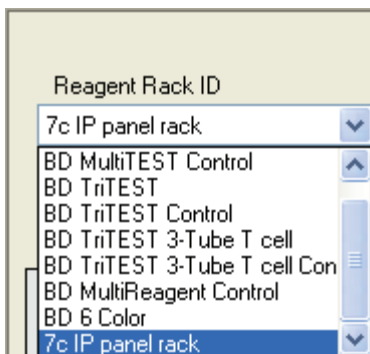
- Exit BD FACSLink software.

## Importing and Running a BD FACSLink Worklist in BD FACS SPA Software

- Start BD FACS SPA software and log in.
- Select **File > Open Prep Worklist**.



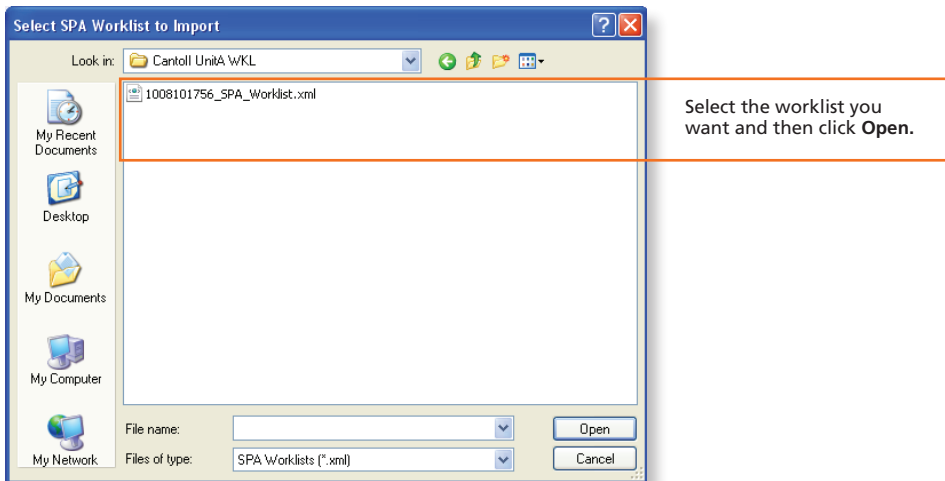
- Select the reagent rack ID you want.



- Click **Run**.
- At the completion of the worklist run, click **Save** in the dialog that appears to save the completed SPA worklist.
- Close the worklist and perform the SPA shutdown procedure, as needed.

## Importing and Running a SPA Worklist in BD FACSCanto Clinical Software

- 1 Start BD FACSCanto Clinical software and log in, if needed.
- 2 Select File > Import SPA Worklist.



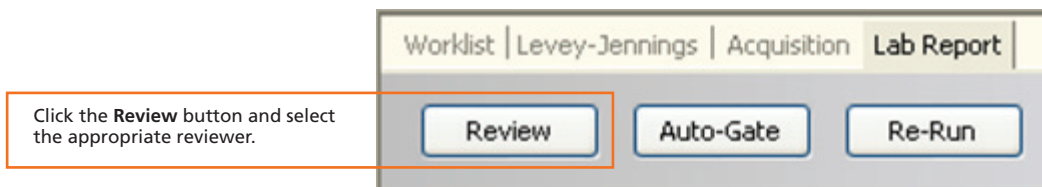
- 3 Verify that information in the worklist is correct.
- 4 Run the worklist.

## Reviewing Lab Reports in BD FACSCanto Clinical Software

- 1 View the Lab report for each entry in the worklist.

	Status	FCS File
Double-click the <b>Status</b> field for an entry in the worklist to view the Lab report for that entry.	OK	Multicheck control00...
	OK	Multicheck low contro...

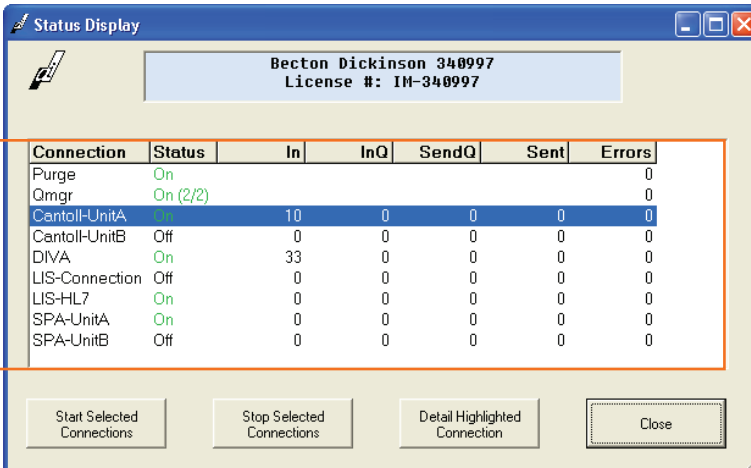
- 2 Inspect plots, gates, and QC messages on the Lab report.
- 3 If needed, manually adjust gates.
- 4 (Optional) When all reports have been reviewed, append a virtual signature to reviewed reports.



## Releasing Results to the LIS

- 1 Start Instrument Manager software and log in.
- 2 Select the appropriate connection in the **Status Display** dialog.

Select the **Cantoll** connection you want and then click the **Detail Highlighted Connection** button.



Connection	Status	In	InQ	SendQ	Sent	Errors
Purge	On					0
Qmgr	On (2/2)					0
Cantoll-UnitA	On	10	0	0	0	0
Cantoll-UnitB	Off	0	0	0	0	0
DIVA	On	33	0	0	0	0
LIS-Connection	Off	0	0	0	0	0
LIS-HL7	On	0	0	0	0	0
SPA-UnitA	On	0	0	0	0	0
SPA-UnitB	Off	0	0	0	0	0

- 3 Display the **BD FACSLink** window and transfer results.



Click the **Transfer Results** button and select the statistics file to transfer.

- 4 Exit the software.