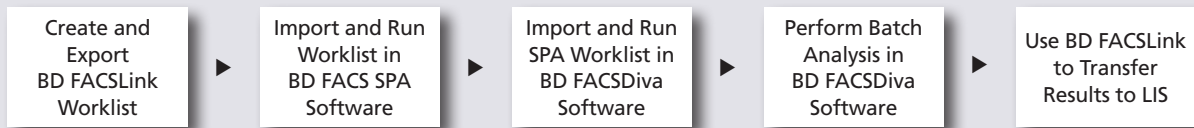


Quick Reference Guide for Using Custom Panels with BD FACS SPA and BD FACSDiva Software and the BD FACSLink LIS Interface

This guide contains instructions for using custom panels* created in BD FACSDiva™ software v6.1.3 and BD FACST™ SPA software versions 3.0.1 and 4.0.1 with the BD FACSLink™ laboratory information system (LIS) interface.

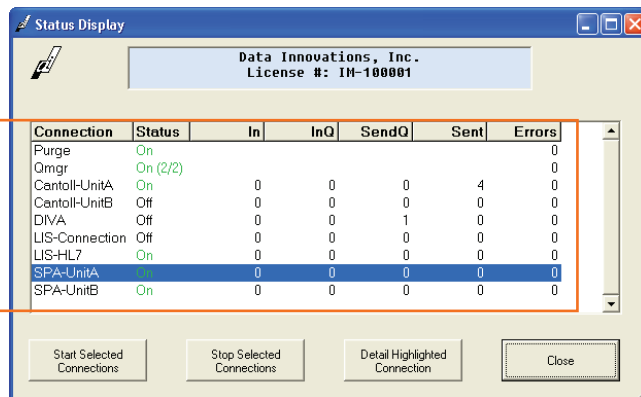
Workflow Overview



Helping all people live healthy lives

Creating and Exporting a Worklist in BD FACSLink (Instrument Manager) Software

- 1 Start Instrument Manager software and log in.
- 2 Select the appropriate connection in the **Status Display** dialog.

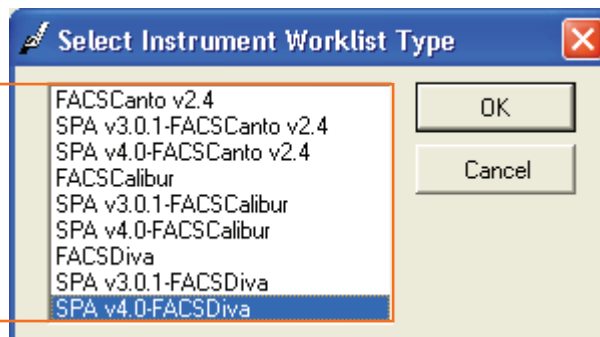


Select the SPA connection you want and then click the **Detail Highlighted Connection** button.

- 3 Display the **BD FACSLink** window and create a new worklist.



Click the **New Worklist** button.



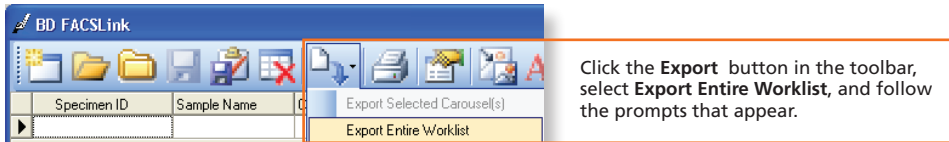
Select the appropriate worklist type.

* For Research Use Only.
Not for use in diagnostic or therapeutic procedures.

- Enter the appropriate information in the **Specimen ID** and **Carousel ID** fields for each specimen.

Specimen ID	Sample Name	Case Number	Panel	Carousel ID	Start	End	Unique Carousel ID	Tube Size	Primary Rack Position
Donor A		Donor A1	7c IP panel	1	TBD	TBD	N/A	N/A	N/A

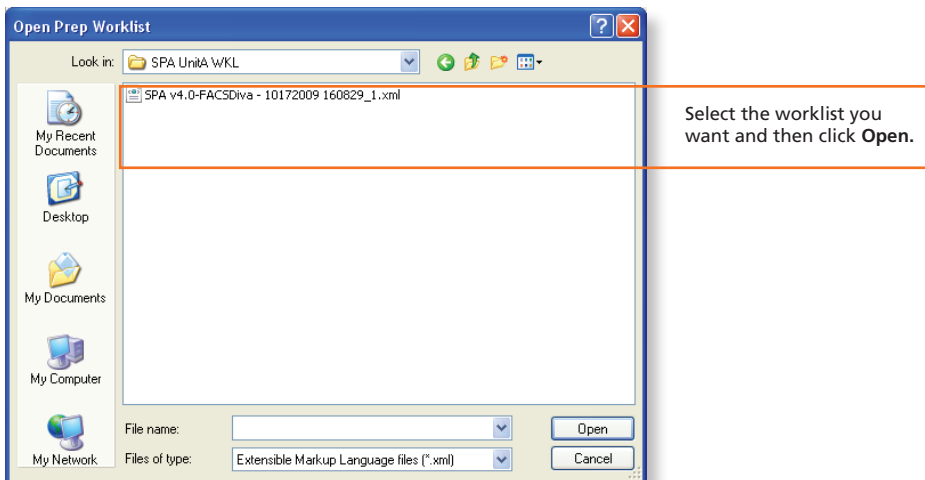
- Export and save the worklist.



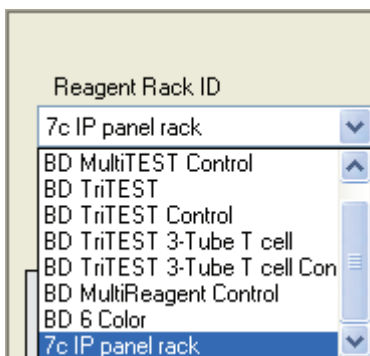
- Exit BD FACSLink software.

Importing and Running a BD FACSLink Worklist in BD FACS SPA Software

- Start BD FACS SPA software and log in.
- Select **File > Open Prep Worklist**.



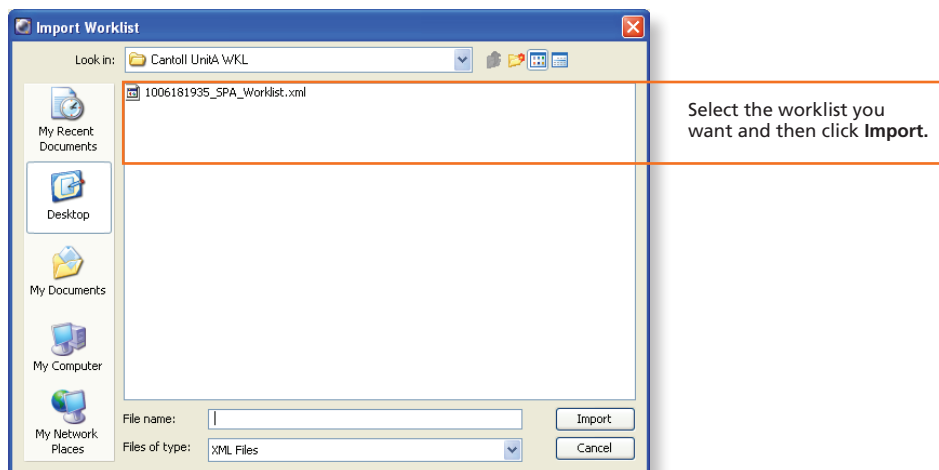
- Select the reagent rack ID you want.



- Click **Run**.
- At the completion of the worklist run, click **Save** in the dialog that appears to save the completed SPA worklist.
- Close the worklist and perform the SPA shutdown procedure, as needed.

Importing and Running a SPA Worklist in BD FACSDiva Software

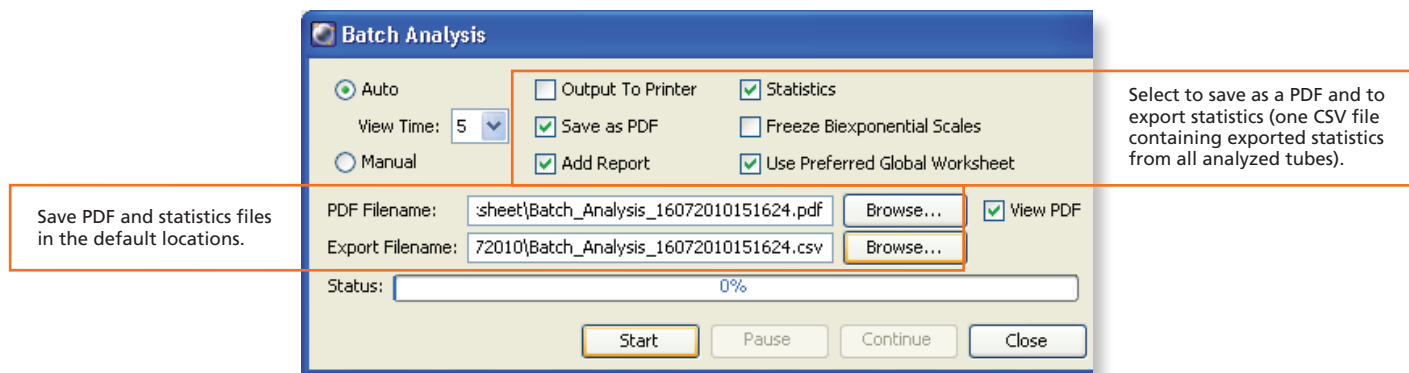
- 1 Start BD FACSDiva software and log in, if needed.
- 2 Select **File > Import > Worklist**.



- 3 Verify settings in the **User Preferences** dialog if needed.
- 4 Select **Carousel > Carousel Setup** and verify settings.
- 5 Run the worklist.

Performing Batch Data Analysis in BD FACSDiva Software

- 1 In the Browser, right-click the experiment containing the data you want to analyze and select **Batch Analysis**.
- 2 Make appropriate selections in the **Batch Analysis** dialog.



- 3 If you need to adjust gates during batch analysis, click **Pause**, adjust the gates, and then click **Continue**.

Transferring Results to the LIS

- 1 Start Instrument Manager software and log in.
- 2 Select the appropriate **DIVA** connection in the **Status Display** dialog.
- 3 Display the **BD FACSLink** window and transfer results.



- 4 Exit the software.