



Connected - Integrated - Secured

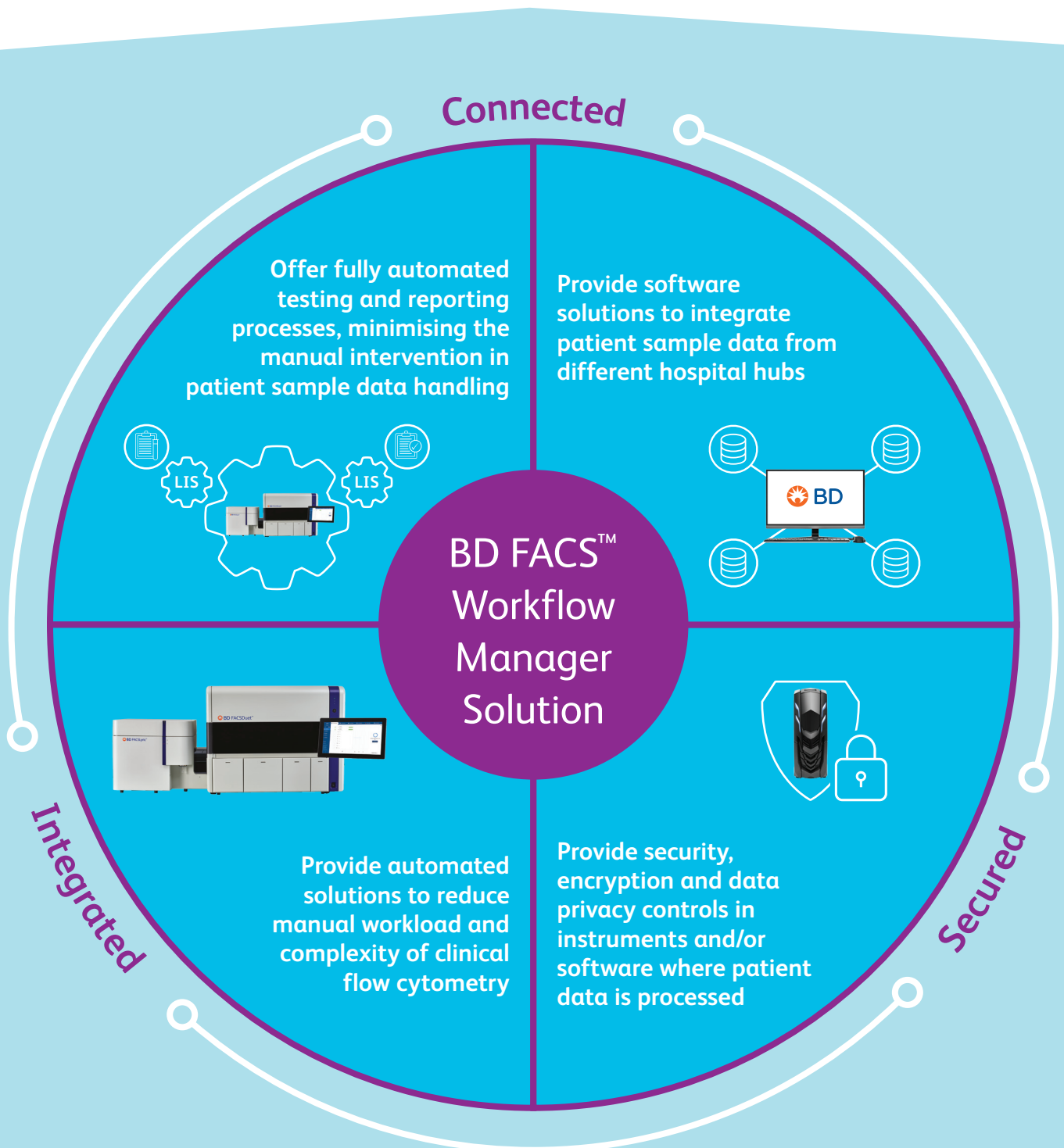
BD FACS™ Workflow Manager Solution.

Optimising efficiency and productivity in clinical flow cytometry laboratories.



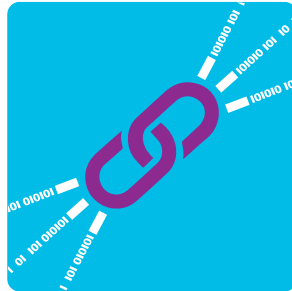
The BD FACS™ Workflow Manager

The BD FACS™ Workflow Manager is a middleware solution providing seamless bi-directional workflows, secure connectivity and long-term data files storage solution, all accessible anytime, anywhere*.



Connected

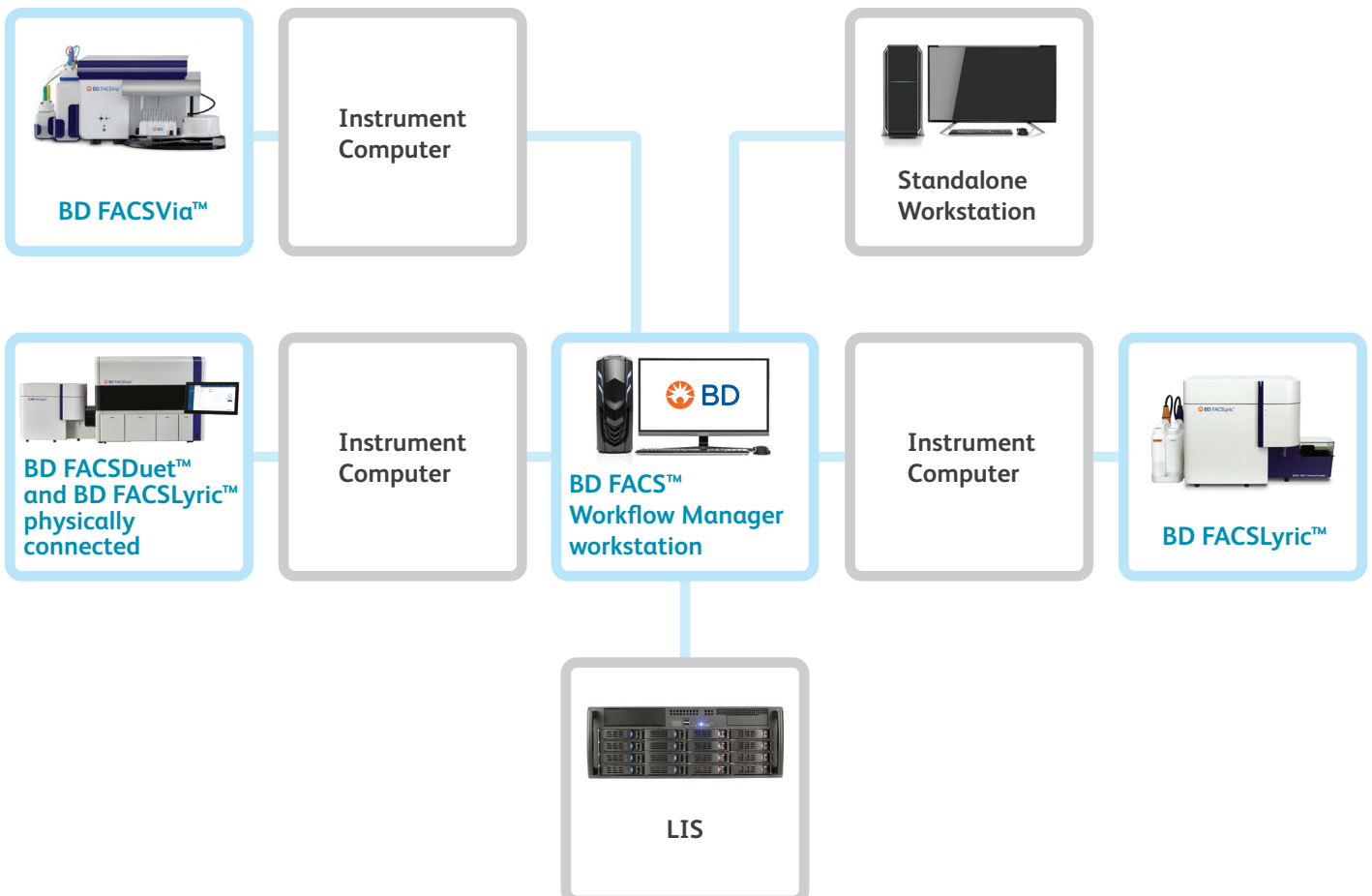
Multi instrument connectivity
Unlimited users



Remote service
Concurrent LIS connections

As clinical laboratories strive for improved productivity, the need to interface laboratory instruments to a laboratory information system (LIS) has become increasingly important.

Developed by BD®, the BD FACS™ Workflow Manager middleware solution allows bi-directional communication of test and patient sample data between BD Flow Cytometers (BD FACSLyric™, BD FACSVia™), BD Sample Preparation System (BD FACSDuet™), analysis workstations and the Hospital and/or Laboratory Information System (HIS/LIS).

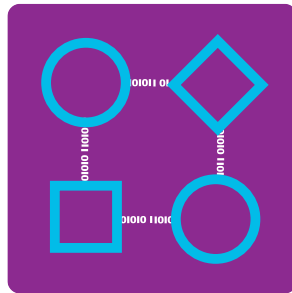


Integrated

Retrieval of sample data files
anytime, from anywhere*

Single interface for multiple
assay workflows

Long-term data files
storage solution



Data information
delivered in real time

Full tracking of patient
sample data

Full testing history of
re-analysis and re-runs

By providing automated reporting workflows and data transfer between the Laboratory Information System (LIS) or Hospital Information System (HIS) and the BD FACS™ Workflow Manager reduces manual tasks and workload, minimising the manual intervention in patient sample data handling, optimising efficiency and productivity in clinical flow cytometry laboratories and patient sample data management.



Secured

Multi-user permission level

Encryption and integrity of
patient sample data



Cybersecurity and
Data Privacy

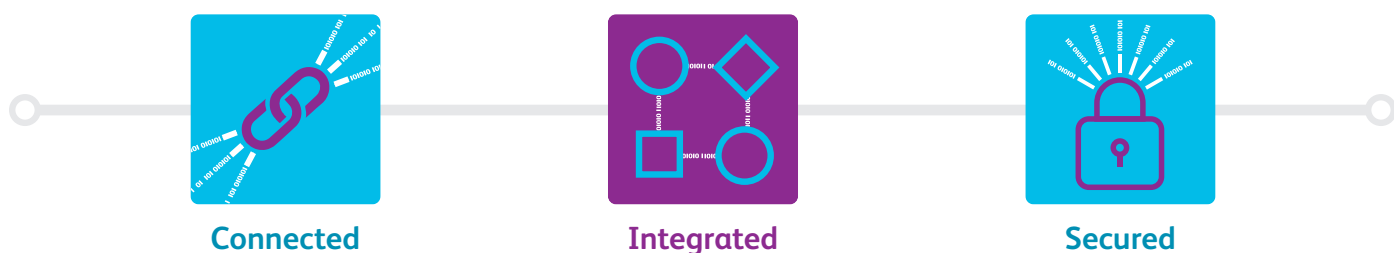
System and samples
audit trail

In line with GDPR requirements for protection of personal data and privacy of all European citizens, this BD middleware solution provides security, encryption and data privacy controls in instruments and/or software where patient data is processed and stored.



Optimise laboratory efficiency and productivity, improve automation and turnaround time, guarantee data protection and privacy.

The BD FACS™ Workflow Manager informatic middleware solution helps you to address laboratory challenges and improve laboratory performance



Ordering information

Product	CAT No.
BD FACS™ Workflow Manager software – includes 2 connections and 1 year warranty	664011
BD FACS™ Workflow Manager Computer Assembly - includes workstation, UPS and 1 year warranty	664016
BD FACS™ Workflow Manager 24-inch Monitor - includes 1 year warranty	663454
BD FACS™ Workflow Document Management software – includes 1 year warranty	664012
BD FACS™ Workflow Automatic Review software – includes 1 year warranty	664013
BD FACS™ Workflow Manager Connection Service - includes one connection license and 1 year warranty	664014
BD FACS™ Workflow Manager Client software – includes 1 year warranty	664015

*As allowed by license

BD- Europe, Terre-Bonne Park - A4, Route de Crassier 17, 1261 Eysins, Switzerland

bd.com

The BD FACSLyric™, BD FACSVia™ flow cytometers and the BD FACSDuet™ Sample Preparation System are Class 1 Laser Products
BD FACSLyric™ and BD FACSVia™ Flow Cytometers and BD FACSDuet™ Sample Preparation System are CE-marked in compliance with the European In Vitro Diagnostic Medical Devices Directive 98/79/EC

© 2021 BD. BD, the BD Logo and all other trademarks are property of Becton, Dickinson and Company. BD-47589

